

# User Manual

## NSC-100 Kiln Controls

e  
Kilns



# Table of Contents

Safety Guidelines.....	1
Screen Outline .....	2
Quick Start Guide .....	3
Menu Bar .....	3
Status Screen .....	3
Trend Screen .....	3
Setup Screen .....	4
Schedule Screen .....	4
<b>Schedule Controls.....</b>	<b>5</b>
Entering a Schedule.....	5
Saving a Schedule.....	5
Loading a Saved Schedule .....	5
<b>Data Logging .....</b>	<b>5</b>
Starting a Data Log .....	5
Retrieving a Data Log .....	5
<b>Remote Access .....</b>	<b>5</b>
Password Change & VNC/WEB Remote Access Configuration .....	5
Setting up Remote Access with VNC Viewer .....	6
<b>Warranty .....</b>	<b>7</b>
<b>Control Wiring .....</b>	<b>8</b>
<b>PLC Power Wiring.....</b>	<b>12</b>
<b>Slice Relay Wiring .....</b>	<b>13</b>
<b>Inputs Wiring .....</b>	<b>14</b>

**⚠️ WARNING** **Read through entire manual before installing, operating, or servicing this unit.** Failure to follow any steps or guidelines could result in personal injury, death, destruction of property or may cause the unit to become inoperable. **This manual must be kept with the unit at all times.**

## Safety Guidelines

### Precautions

Do not operate if the unit or any of its parts:

- Have been exposed to fire.
- Have been submerged in or exposed to excessive water.
- Has significant interior or exterior damage.


If any of the above are suspected make sure to have your unit serviced by a qualified professional before continuing operation.

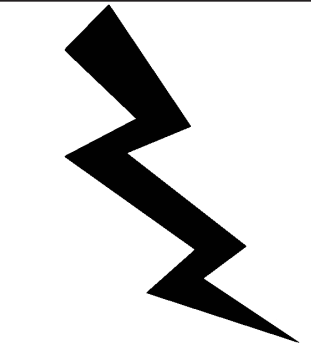
### Electrical Grounding

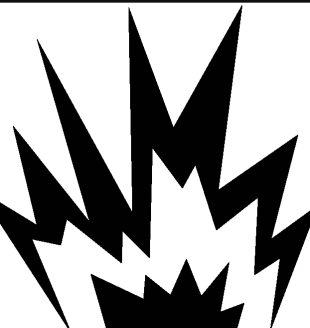
*The unit must be grounded.*

Failure to ground the unit will result in unreliable performance or an inoperative unit. You can ground the unit by connecting the unit to a grounded metal, permanent wiring system. Make sure the unit is in accordance with national and local electrical codes. If you don't know the building codes in your area or need more information, please contact your municipal office.

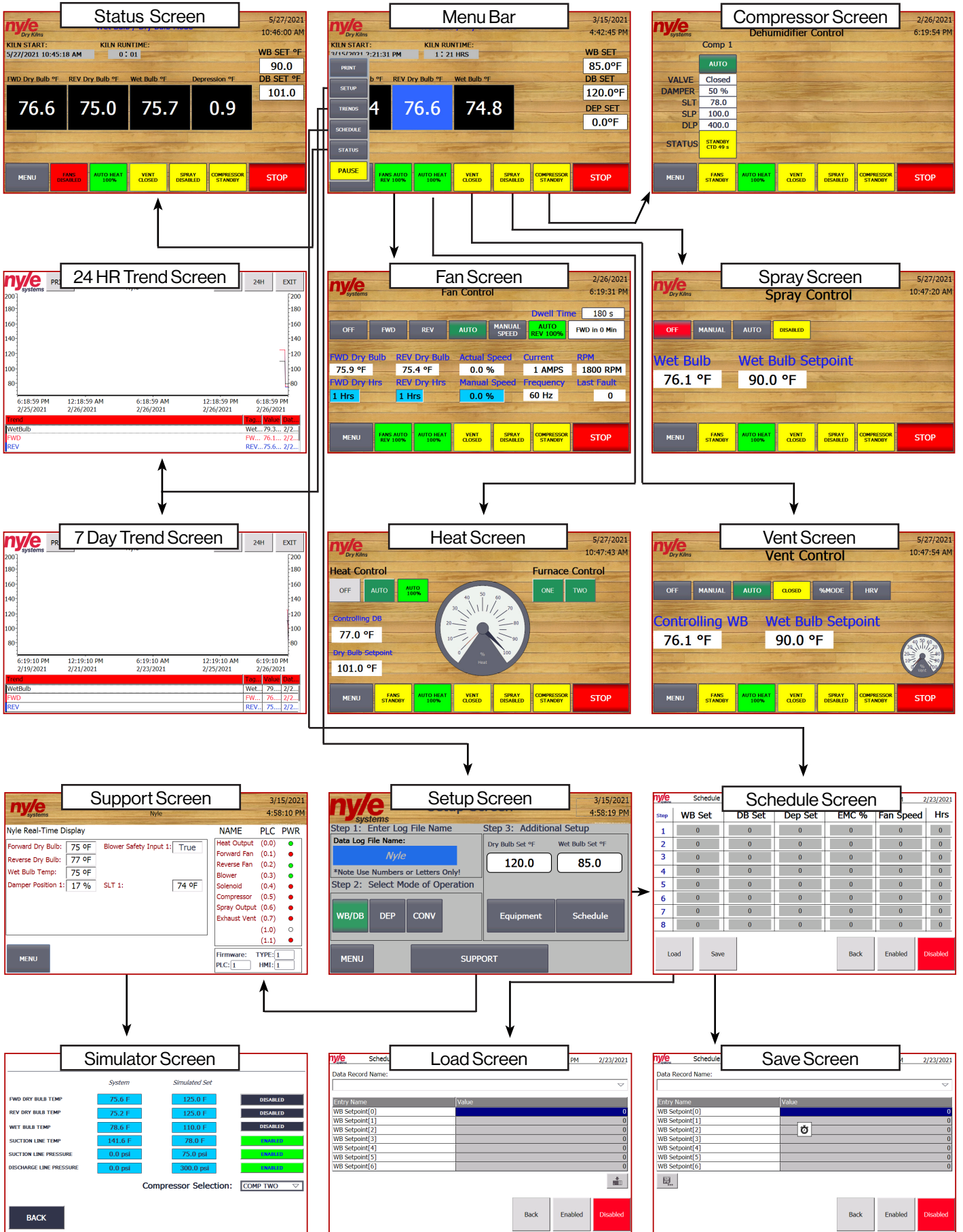
<b>⚠️ WARNING</b>	<b>Refrigerant!</b>
<ul style="list-style-type: none"><li>• Unit contains refrigerant under high pressure. Refrigerant must be recovered to relive pressure before servicing.</li><li>• <b>DO NOT use unapproved refrigerants, substitutes or additives.</b></li><li>• Failure to abide by these guidelines can result in death, injury and property damages.</li><li>• Contact Nyle's service department for more information on refrigerant options.</li></ul>	

<b>⚠️ WARNING</b>	
<b>High Temperatures!</b>	
<ul style="list-style-type: none"><li>• Kiln chamber can reach internal temperatures of over 90°F. working in these temperatures can cause heat stroke and minor burns.</li><li>• Pregnant women, children, the elderly and those with significant health issues are at higher risk of heat stroke and must be supervised in high temperatures.</li><li>• Kiln operators should check for temperature and take proper safety precautions before entering the kiln chamber.</li></ul>	

<b>⚠️ WARNING</b>	
<b>Electrical Shock!</b>	
<ul style="list-style-type: none"><li>• <b>Turn off power to unit before service.</b></li><li>• Make sure wires are labeled before disconnecting.</li><li>• Test unit after reconnecting wires.</li><li>• Failure to do the above could result in death or injury.</li></ul>	

<b>⚠️ WARNING</b>	
<b>Explosion Hazard!</b>	
<ul style="list-style-type: none"><li>• <b>DO NOT</b> purge or pressurize this system with oxygen to test for leakage. Using oxygen may cause explosive reaction.</li></ul>	

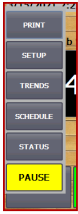
# Screen Outline





# Quick Start Guide

## Menu Bar



From the menu bar, the user can navigate to 3 function screens; status screen, trend screen and setup screen.

### Function Buttons:



The "Menu" button will toggle the function buttons to access the function screens



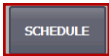
The "Print" button allows you to print the screen you are on. **Note: a printer must be installed and configured to your control in order for this feature to work.**



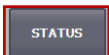
The "Setup" button will bring you to the setup screen where you can enter the log file name, kiln mode as well as navigate further to the schedule and support screens.



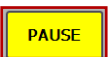
The "Trend" button will bring you to the trend screen where you can see the graphs of the kiln cycle.



The "Schedule" button will bring you to the schedule screen where you can see and edit the kiln's schedule.



The "Status" button will bring you to the status screen where you can see the status of the kiln cycle.



The "Pause" button allows you to pause the kiln cycle at any point and be able to resume from where you left off.

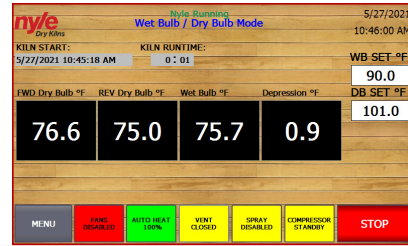
### Equipment Buttons:



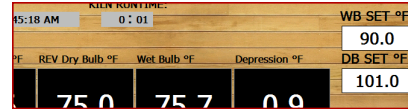
The user can also access the five equipment screens along the bottom. These screens are the fan, heat, vent, spray and compressor. These buttons will take the user to the corresponding screens but also display their current conditions

## Status Screen

From the status screen, the user can see all of the real time kiln conditions during the drying cycle.



### Temperature & Setpoints:



This section shows the actual temperatures;

FWD - The temperature of the dry bulb sensors in front of the fan wall (if fans are moving in the forward position)

REV - The temperature of the dry bulb sensors behind the fan wall (if fans are moving in reverse)

WET - The average temperature of the wet bulb sensors.

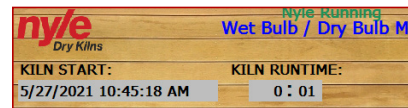
Wet Bulb > Wet Bulb Setpoint = Vents will open

Wet Bulb < Wet Bulb Setpoint = Vents will close

**Note: the FWD or REV value that is highlighted in blue indicates which direction the fans are moving. In this case they are running in reverse.**

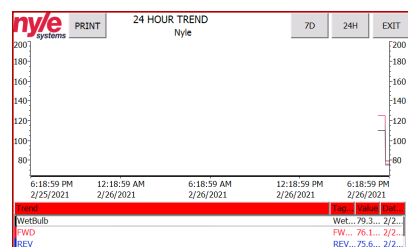
Dry Bulb Set points & Wet Bulb Set points are the current set points used to control. If the schedule is enabled, schedule values are shown on the schedule screen. If the schedule is disabled, these values become "live editable" and the controller will follow the values you enter here.

### Kiln Start & Runtime:



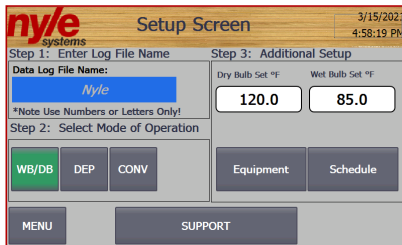
This section logs the start time of the cycle and how long its been running for.

## Trend Screen



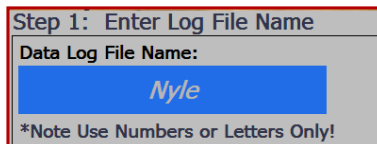
From the trend screen, the user can see all of the graphs for the kiln cycle. Note: the user can toggle between a 24 hour & 7 day view by using the buttons on the top right of the screen.

## Setup Screen



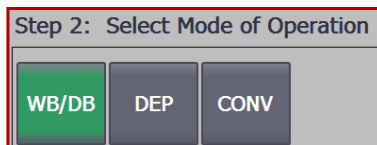
From the Setup screen, the user can set the Log File Name, Select the Mode of operation and navigate to the Schedule and Support Screens.

### Log File Name:



Under this step the user can select the name that the kiln cycle will be recorded under in the data log.

### Select Mode of Operation:



Under this step the user can select the mode of operation for the kiln. The user can choose from three modes of operation; Wet Bulb/ Dry Bulb, Depreciation or Conventional.

**Wet Bulb / Dry Bulb Mode:** This mode controls our standard dehumidification system via a wet bulb temperature inside the kiln. The controlling dry bulb (dry bulb based on fan direction) controls the heat output and the exhaust vents.

**Depression Mode:** This mode controls the heat based on the controlling dry bulb (dry bulb based on fan direction). Either our standard dehumidifications system or the exhaust vents are controlled via the depression inside the kiln (Controlling Dry Bulb Temp – Wet Bulb Temp).

Example: 140F Dry Bulb – 100F Wet Bulb = 40F Depression

**Conventional Mode:** This mode controls the heat based on the controlling dry bulb (dry bulb based on fan direction). The exhaust vents are controlled by the wet bulb temperature.

## Schedule Screen

Step	WB Set	DB Set	Dep Set	EMC %	Fan Speed	Hrs
1	0	0	0	0	0	0
2	0	0	0	0	0	0
3	0	0	0	0	0	0
4	0	0	0	0	0	0
5	0	0	0	0	0	0
6	0	0	0	0	0	0
7	0	0	0	0	0	0
8	0	0	0	0	0	0

The Schedule Screen has 8 time based steps. For each step you can set;

WB Set - Will call Vent to open when Wet Bulb actual is above this value and to close when below.

DB Set - Will call for Heat to come on when Dry bulb is below this value and will shut off when above.

Fan Speed - Percentage of VFD output. Can be 100% with wood MC above 28% and 80% when below 28%

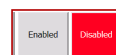
Hrs - Time to run in this step before progressing to the next step.



Current schedule can be Saved or Loaded from memory.



Takes you back to the Setup Screen.



These buttons enables / disables the Schedule function. When "Enabled" is green, the controller will follow the schedule as per the schedule screen. When "Disabled" is red, the controller will follow the Dry bulb set point and Wet bulb set point, settable "live" on the home screen.

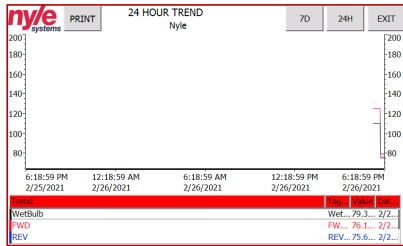
### Incase of kiln power failure during schedule

If your kiln experiences power failure during a schedule your kiln will power back up and start the schedule over. To resume where you left off you must;

- Stop the kiln
- Changes the completed steps "Hrs" to 0
- Start the Kiln

**Note: Be sure to save this schedule under a different name**

## Schedule Controls



### Entering a Schedule

A new schedule can be entered either manually or by pressing the LOAD button. If no previous schedules have been saved, the HMI will not be able to load a schedule into the PLC control. Navigate to the SETUP screens and then to Schedule to begin the schedule control process.

On the main schedule screen the full 8 step schedule that is currently loaded into the PLC will be displayed. To change values in that schedule simply touch on the desired set-point, enter a new value, and press the return key. Once satisfied with the currently loaded schedule, press the "Enabled" key to run via the automatic set point changing schedule control.

### Saving a Schedule

If you would like to SAVE a schedule for later use, first enter into the PLC as described above. Once you are satisfied with the currently loaded schedule press the "Save" button to display the save schedule interface. You may verify the schedule about to be saved by pressing the up and down arrows displayed on the left of the screen. Press the arrow facing left to begin the save process. A pop-up will appear verifying the save command. Press "Yes" followed by "Save As" to rename the schedule in a way that makes sense for the schedule. See image above.

### Loading a Saved Schedule

Once a schedule has been saved, it can be reused over and over for efficient drying processes. To load a schedule, navigate to the schedule setup screen. Press the "Load" button to begin the loading process. Press the left arrow once, and press on the schedule you want to load into the PLC. Pressing the "Back" button pushes the new schedule into the PLC for runtime. Verify the loaded schedule before pressing the "Enabled" key.

## Data Logging

### Starting a Data Log

Logging data with the NSC100 control is simple. Just by entering a LOTID and pressing the start button automatically begins the data logging process. The control is capable of storing up to 2 complete cycle logs in most cases. Once the data log storage space has been filled up on the PLC, an operator message will appear requiring the download and clearing of the logs through the retrieval system.

A log bypass option is available if the data log is not required. To access this operation press "SETUP" and afterwards "SUPPORT". This operator screen will display all system real time data and the log bypass button. Press the log bypass button to disable the data log function.

### Retrieving a Data Log

All data logs are stored on the PLC memory card as a CSV data log file. To obtain the data logs the kiln operator may either log into the PLC via the web interface or pull the SD card and copy over the files to a computer.

To retrieve the data through the web interface, enter the IP address of the connected PLC into a web browser connected to the same local area network. Click "ENTER" to proceed into the default Siemens web interface. Login using supplied login from Nyle Systems. Click on "DATA LOGS" to view, download and clear the data logs stored on the PLC. Each log file will have the same name as the LOT ID that was entered when starting the kiln cycle.

## Remote Access

### Password Change & VNC / WEB Remote Access Configuration

The HMI screen will be configured to enable VNC and HTTP web remote access when shipped. However, you may need to set up remote access after an upgrade or replacement of the HMI, follow the steps below.

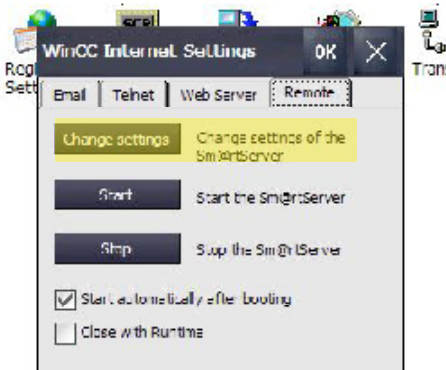
Enter the control menu by pressing the top right corner of the screen on the clock.

When you are in the control menu, click on WinCC Internet Settings

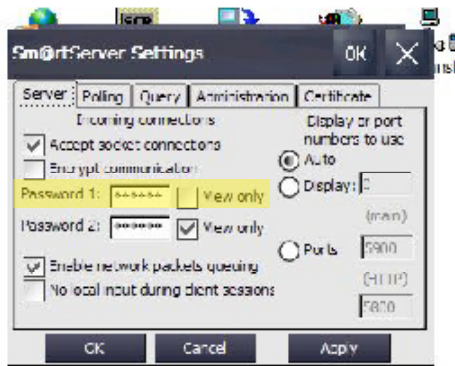


**VNC:**

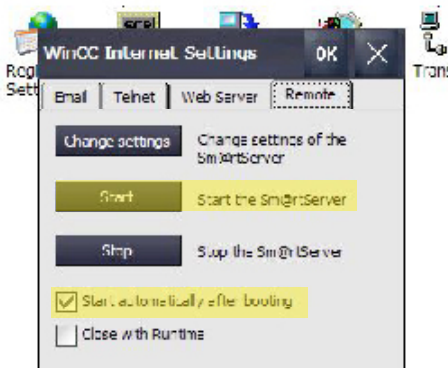
1. Choose the "Remote" tab and click the "Change Settings" button



2. Choose the "password 1" box and set the password to the default password of "100" or a user selected password. **Note: if the Master password is lost a service charge will be required for a reload of the firmware.**



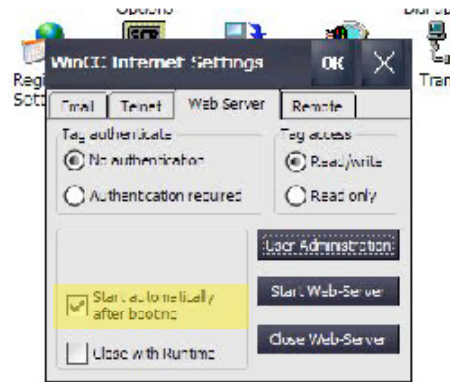
3. Apply and choose yes to restart.



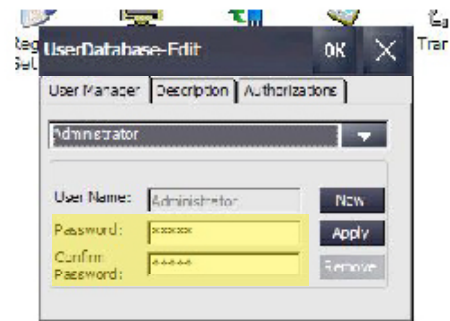
4. Check the "Start automatically after booting" box.
5. Press the "Start" button and press OK. You will now have remote access to this HMI.

**WEB Server:**

1. Choose the "Web Server" tab



2. Check the "start automatically after booting" Box.
3. Click "User Administration"



4. Under the "User Manager", Change the password and confirm password to the default password of "100" or a user selected password. **Note: if the Master password is lost a service charge will be required for a reload of the firmware.**
5. Apply and choose OK and then select yes to restart.

**Setting up Remote Access with VNC Viewer**

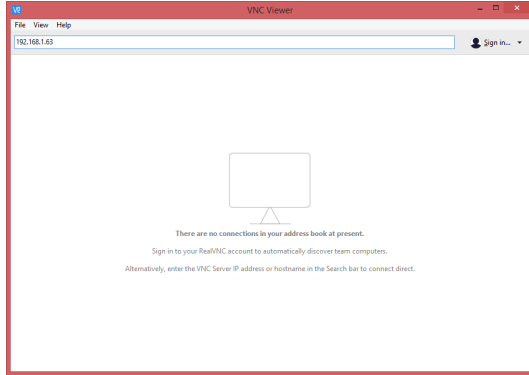
**Note: ask your local IT support to set this up.**

To remote into the HMI screen from another device, the user will need to install a program called VNC Viewer. The link for this program is;

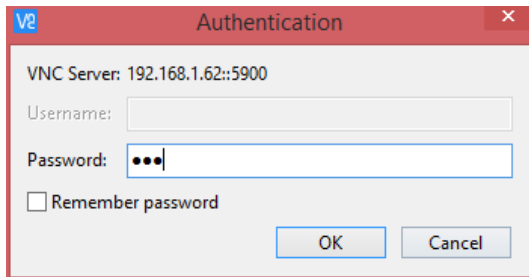
<https://www.realvnc.com/en/connect/download/viewer/>



After the VNC Viewer is installed, the user will need to set up a connection to the HMI screen. To do this, enter the IP Address of your HMI screen in the search bar at the top of the window in VNC Viewer. The search bar will read Enter a VNC Search address or search. This is where the user will enter in the IP address and press enter.



When the enter key is pressed, a window will pop up asking for a password. The password will always be 100 unless set by the user.



Type in 100 or the defined password and then press OK or enter. This will bring up the same screen that is displayed on the HMI screen and the user will be able to monitor or change values as the user would be able to on the HMI screen.

## Warranty

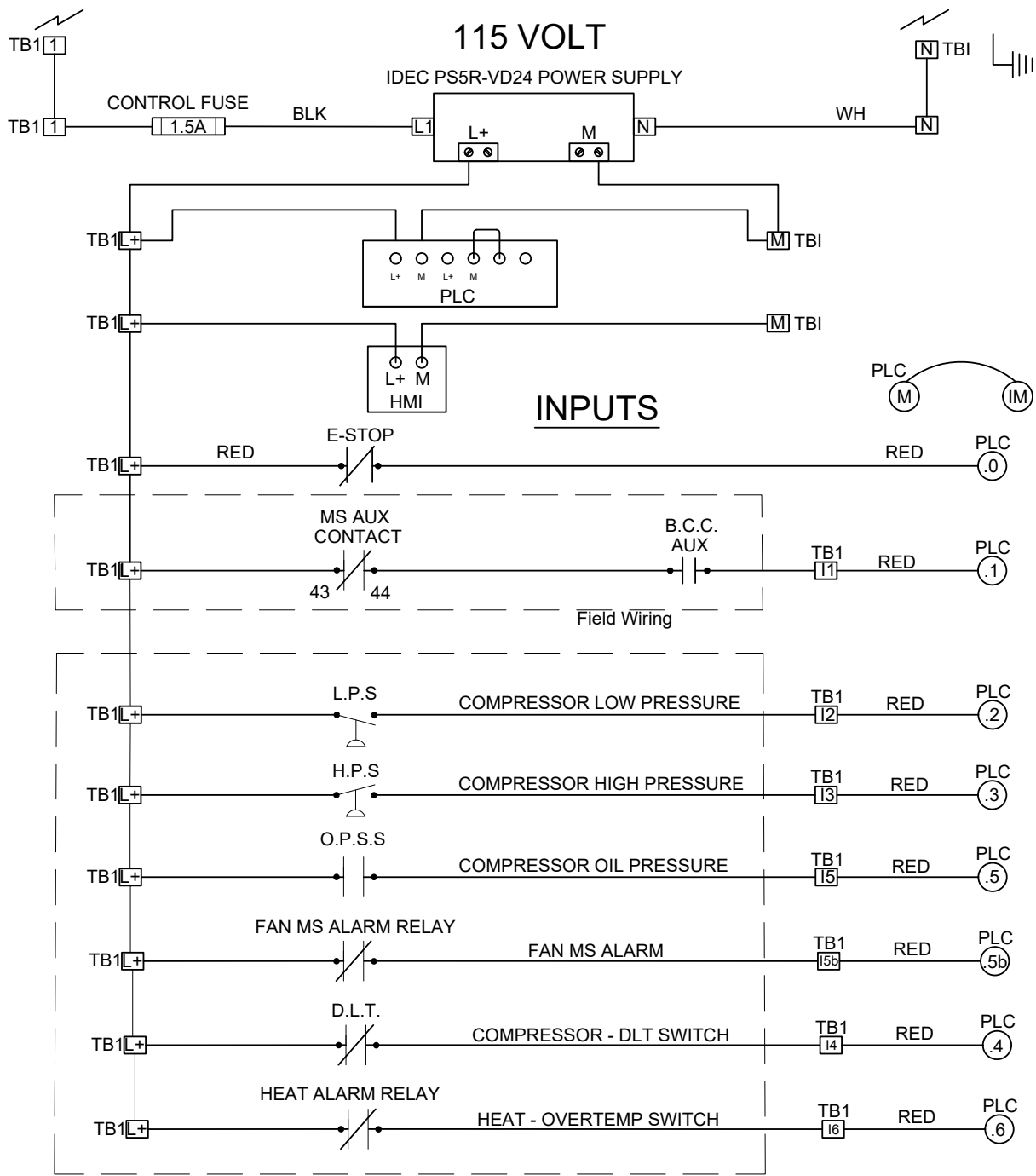
**LIMITED WARRANTY:** The equipment supplied by Nyle Systems is warranted to be free from defects in workmanship and materials for a period of one year from the date of the original installation under normal use and maintenance, or 15 months from the date of delivery, whichever comes first. A new or re-manufactured part will be supplied by Nyle Systems if the defective part is first returned to Nyle Systems for inspection. The replacement part assumes the unused portion of the warranty. The warranty does not include labor or other costs incurred for diagnosis, repairing or removing, installing or shipping the defective or replacement part(s). Nyle Systems makes no warranty as to the fitness of the equipment for a particular use and shall not be liable for any direct, indirect or consequential damages in conjunction with this contract and/or the use of its equipment. Buyer agrees to indemnify and save harmless Nyle Systems from any claims or demands against Nyle Systems for injuries or damages to the third parties resulting from buyer's use or ownership of the equipment. No other warranties, expressed or implied, will be honored unless in writing by an authorized officer of Nyle Systems.

Model \_\_\_\_\_


Serial Number \_\_\_\_\_

Date Purchased \_\_\_\_\_

# Control Wiring



MS AUX CONTACT - MOTOR STARTER AUX CONTACT  
 B.C.C. AUX - BLOWER CONTACT COIL AUX CONTACT  
 L.P.S. - LOW PRESSURE SWITCH  
 H.P.S. - HIGH PRESSURE SWITCH  
 O.P.S.S. - OIL PRESSURE SAFETY SWITCH  
 D.L.T. - DISCHARGE LINE THERMOSTAT

		TITLE	
		CONTROL WIRING 1-1	
<small>12 Stevens Road                  Brewer, Maine 04412                  Tel: 1-207-888-8330 Int: 1-800-777-6953                  Fax: 1-207-888-1101 Email: info@nyle.com</small>		PART NUMBER	
		NSC KILN	
DRAWN BY	AS	DWG FILE NAME	NSC KILN
CHECKED	DC	SCALE	NTS
		REV	2021.1.2
		SHEET	1 OF 4

TB2

1
N
N

TB1

L+
L+
L+
M
M
M
10
11
12
13
14
15
16
17
I.5b
M
AQ0
AQ1
M
AI0
AI1
W
R
B
W
R
B
W
R
B
W
R
B
W
R
B

FWD  
 DRY  
 BULB  
 REV  
 DRY  
 BULB  
 WET  
 BULB  
 SUCTION  
 LINE  
 TEMP

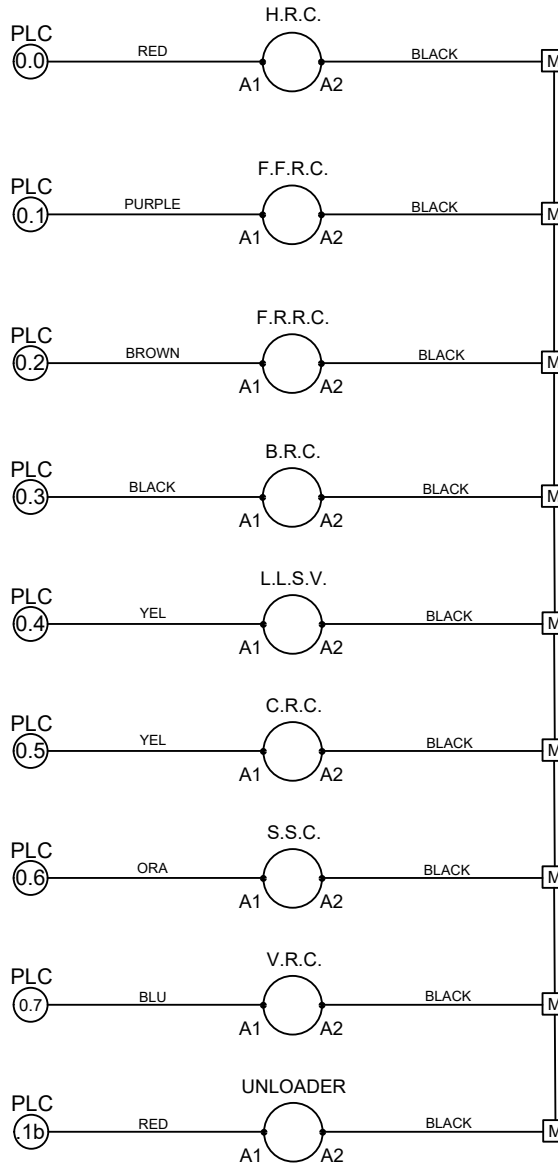
TB3

L+
M
A
B

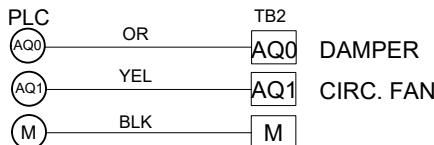
TB4

O0
O1
O2
O3
L+

### SLICE RELAYS

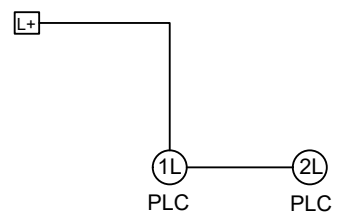


4-20 mA ANALOG OPTIONS  
 VENT AND HEAT OPTIONS



500Ω RESISTORS CAN BE  
 INSTALLED FOR 2-10V  
 ACTUATORS/FANS

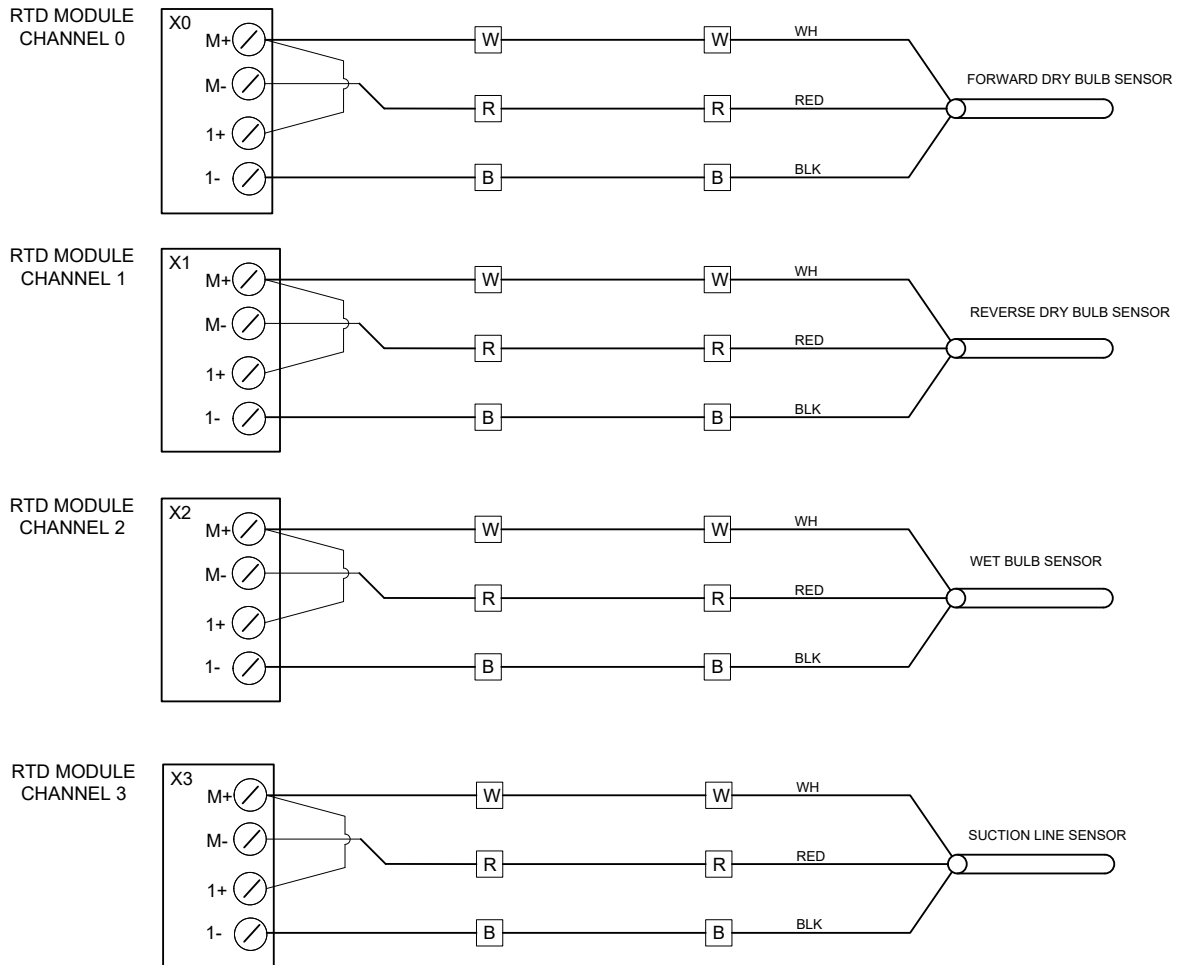
RELAY OUTPUTS




H.R.C. - HEAT RELAY COIL  
 F.F.R.C. - FAN FOWARD RELAY COIL  
 F.R.R.C. - FAN REVERSE RELAY COIL  
 B.R.C. - BLOWER RELAY COIL  
 V.R.C. - VENT RELAY COIL  
 L.P.S. - LOW PRESSURE SWITCH  
 H.P.S. - HIGH PRESSURE SWITCH  
 O.P.S.S. - OIL PRESSURE SAFETY SWITCH  
 D.L.T. - DISCHARGE LINE THERMOSTAT  
 L.L.S.V. - LIQUID LINE SOLENOID VALVE  
 C.R.C. - COMPRESSOR RELAY COIL  
 S.S.C. - SPRAY SYSTEM COIL

 <small>12 Stevens Road          Brewer, Maine 04412          Tel: 1-207-989-4335 Int: 1-800-777-8953          Fax: 1-207-989-1101 Email: info@nyle.com</small>	TITLE CONTROL WIRING 1-2	
	PART NUMBER NSC KILN	
DRAWN BY AS	DWG FILE NAME NSC KILN	REV 2021.1.2
CHECKED DC	SCALE NTS	SHEET 2 OF 4

## RTD SENSOR INPUTS

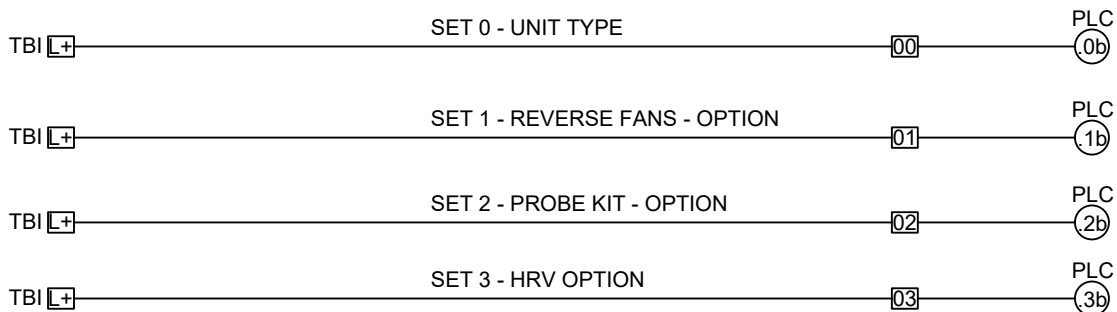


 <small>12 Stevens Road Brewer, Maine 04412 Tel: 1.207.998-4335; Int: 1.603.777.6963 Fax: 1.207.998-1101; Email: info@ny/e.com</small>	TITLE CONTROL WIRING 1-3	
	PART NUMBER NSC KILN	
DRAWN BY AS	DWG FILE NAME NSC KILN	REV 2021.1.2
CHECKED DC	SCALE NTS	SHEET 3 OF 4



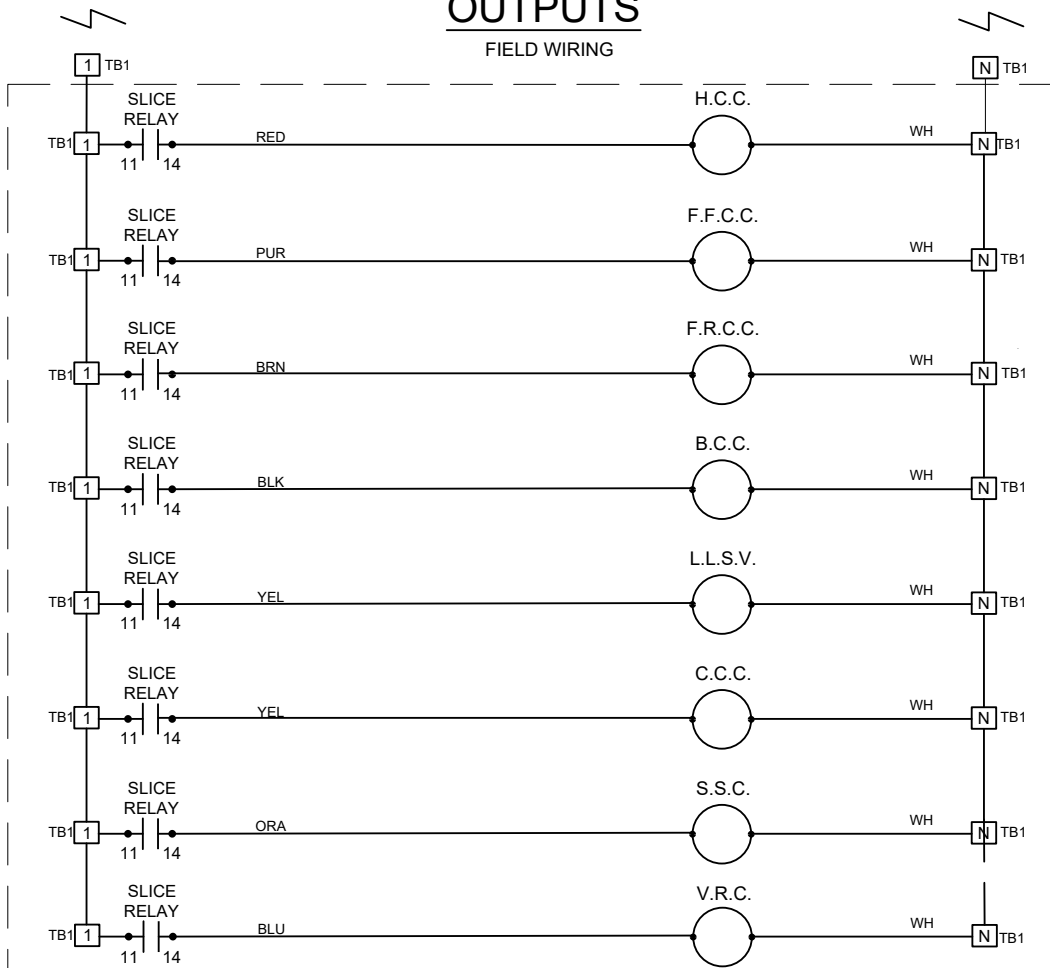
# INPUTS CONT'D

O  
P  
T  
I  
O  
N  
S  
-  
J  
U  
M  
P  
E  
R



# OUTPUTS

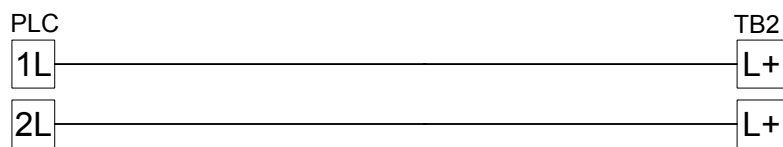
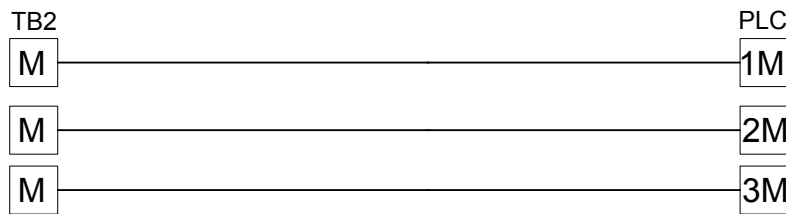
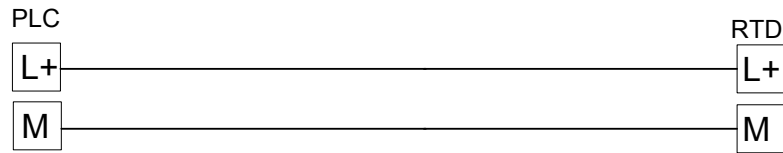
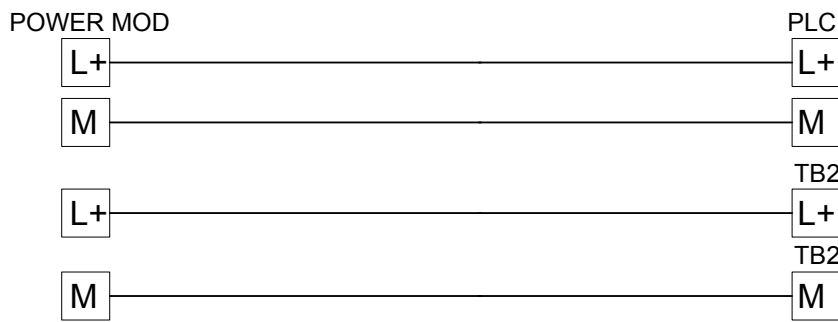
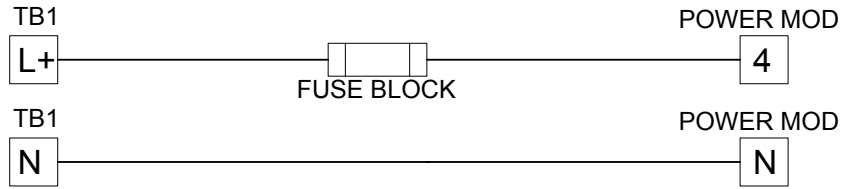
FIELD WIRING



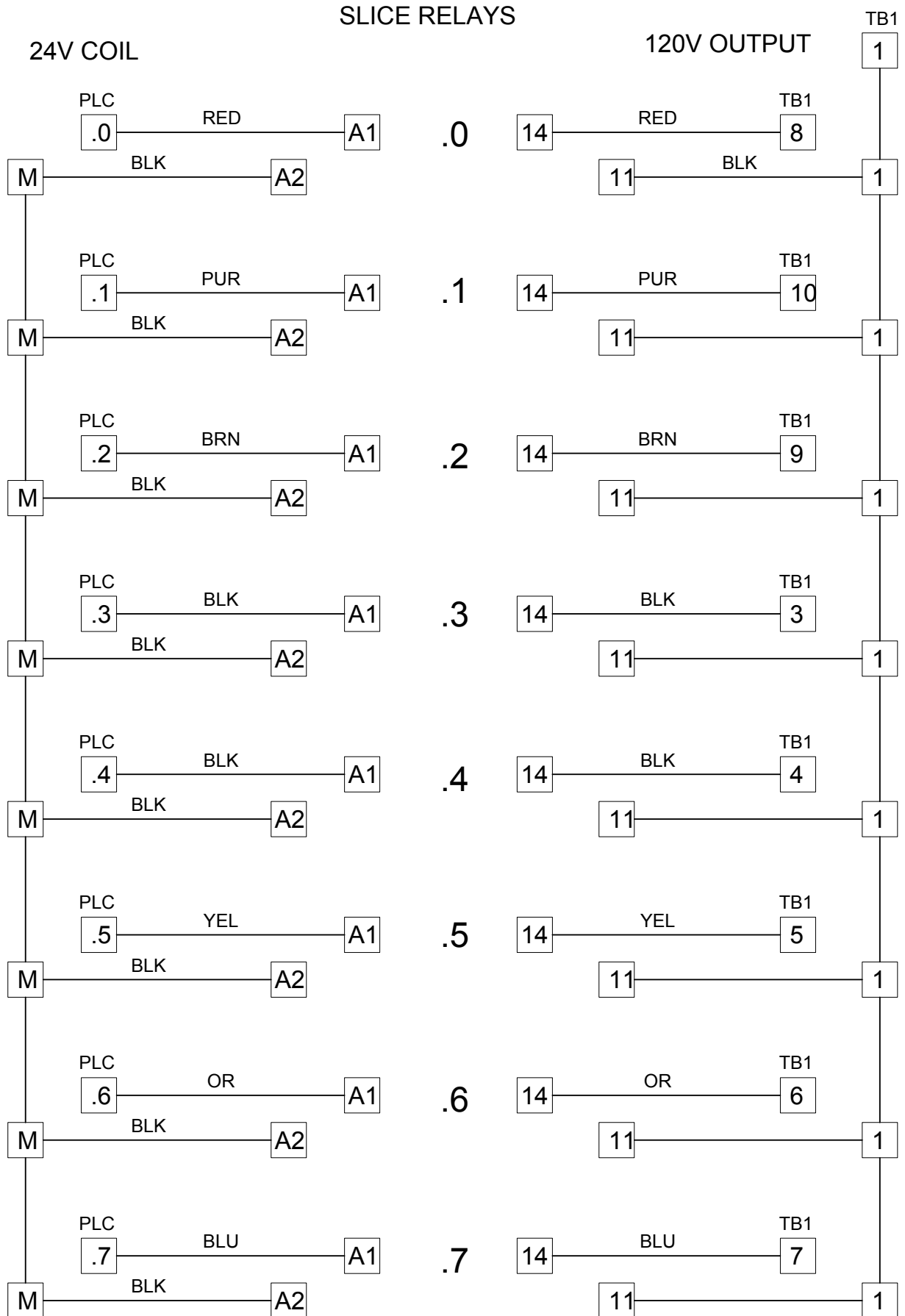
 <small>12 Stevens Road Brewster, Maine 04412 Tel: 1-207-999-4335 Int: 1-800-777-6953 Fax: 1-207-999-1101 Email: info@nye.com</small>	TITLE <b>CONTROL WIRING 1-4</b>	
	PART NUMBER <b>NSC KILN</b>	
DRAWN BY <b>AS</b>	DWG FILE NAME <b>NSC KILN</b>	REV <b>2021.1.2</b>
CHECKED <b>DC</b>	SCALE <b>NTS</b>	SHEET <b>4 OF 4</b>

# PLC Power Wiring

## PLC POWER WIRING

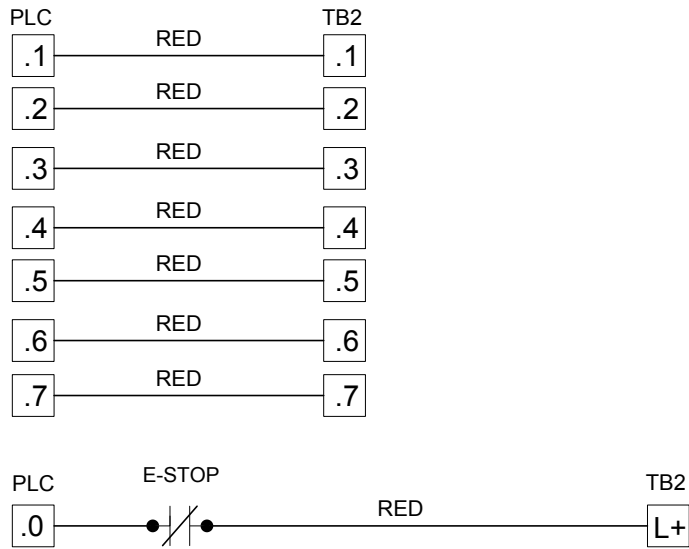


# Slice Relay Wiring

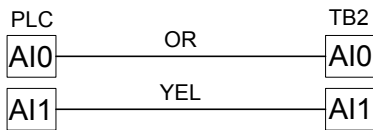


# Inputs Wiring

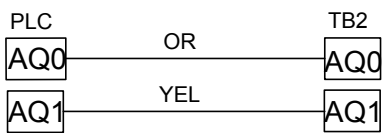
## 24V INPUTS



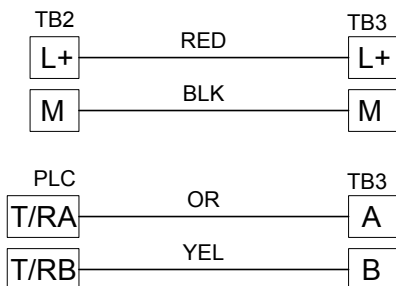
## 0-10VDC ANALOG IN




## 4-20 mA ANALOG OUT



## RS-485 MODBUS



 12 Stevens Road Brewer, Maine 04412 Tel: 1-207-989-4339 Int: 1-800-777-6953 Fax: 1-207-989-1101 Email: info@ny/e.com	TITLE NSC100 INPUTS	
	CUSTOMER	
DRAWN BY NR	DWG FILE NAME	REV 1.0
CHECKED	SCALE NTS	SHEET 1 OF 1





# **nyle** **Dry Kilns**

© 2022 Nyle Dry Kilns  
NSC-100 Manual Rev 2022.01