



# PFT 800

Pallet & Firewood Heat Treater User Manual



PFT 800 Manual  
Rev 2024.01



[www.nyle.com](http://www.nyle.com) - [kilnsales@nyle.com](mailto:kilnsales@nyle.com) - (800) 777-6953





# Table of Contents

<b>Safety Guidelines</b> .....	<b>1</b>
Precautions .....	1
Electrical Grounding.....	1
<b>Screen Outlines</b> .....	<b>3</b>
Kiln Dry Mode.....	3
Heat Treat Mode.....	4
<b>Quick Start up Guide</b> .....	<b>5</b>
Getting Started.....	5
<b>General Control Information</b> .....	<b>7</b>
PLC Modules.....	7
Touch Screen Interface.....	7
Web Server and Remote Access.....	7
Root Screen.....	7
Start Up Screen.....	7
Additional Setup Screen .....	7
Support Screen.....	8
Trend Screen.....	8
Alarm Screen .....	8
<b>System Information</b> .....	<b>8</b>
USDA Requirements.....	8
<b>Sequence of Operations</b> .....	<b>9</b>
System Cycle.....	9
Heat Logic .....	9
Vent Logic.....	9
Data Logs.....	9
<b>Data Logging</b> .....	<b>9</b>
Starting a Data Log .....	9
Retrieving a Data Log.....	9
<b>Remote Access</b> .....	<b>9</b>
Setting up Remote Access on HMI .....	9
Setting up Remote Access with VNC Viewer.....	10
<b>Power Wiring</b> .....	<b>11</b>
<b>Input Wiring</b> .....	<b>12</b>
<b>Output Wiring</b> .....	<b>13</b>
<b>RTD Wiring</b> .....	<b>14</b>
<b>Burner Wiring</b> .....	<b>15</b>
<b>Typical Vent Circuits</b> .....	<b>18</b>
<b>Service Log</b> .....	<b>19</b>



**⚠️ WARNING** **Read through entire manual before installing, operating, or servicing this unit.** Failure to follow any steps or guidelines could result in personal injury, death, destruction of property or may cause the unit to become inoperable. **This manual must be kept with the unit at all times.**

## Safety Guidelines

### Precautions

Do not operate if the unit or any of its parts:

- Have been exposed to fire.
- Have been submerged in or exposed to excessive water.
- Has significant interior or exterior damage.


If any of the above are suspected make sure to have your unit serviced by a qualified professional before continuing operation.

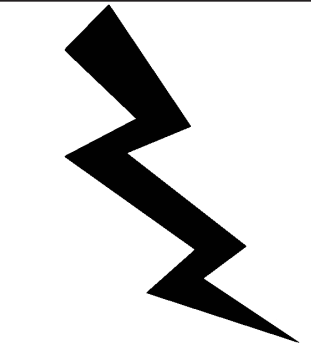
### Electrical Grounding

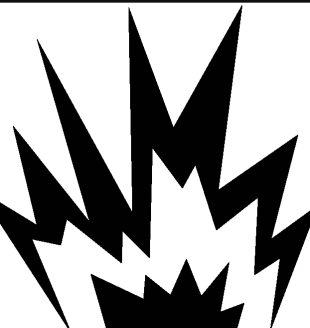
*The unit must be grounded.*

Failure to ground the unit will result in unreliable performance or an inoperative unit. You can ground the unit by connecting the unit to a grounded metal, permanent wiring system. Make sure the unit is in accordance with national and local electrical codes. If you don't know the building codes in your area or need more information, please contact your municipal office.

<b>⚠️ WARNING</b>	<b>Refrigerant!</b>
<ul style="list-style-type: none"><li>• Unit contains R-416a / FR12 refrigerant under high pressure. Refrigerant must be recovered to relieve pressure before servicing.</li><li>• <b>DO NOT use unapproved refrigerants, substitutes or additives.</b></li><li>• Failure to abide by these guidelines can result in death, injury and property damages.</li><li>• Contact Nyle's service department for more information on refrigerant options.</li></ul>	

<b>⚠️ WARNING</b>	
<b>High Temperatures!</b>	
<ul style="list-style-type: none"><li>• Kiln chamber can reach internal temperatures of over 90°F. working in these temperatures can cause heat stroke and minor burns.</li><li>• Pregnant women, children, the elderly and those with significant health issues are at higher risk of heat stroke and must be supervised in high temperatures.</li><li>• Kiln operators should check for temperature and take proper safety precautions before entering the kiln chamber.</li></ul>	

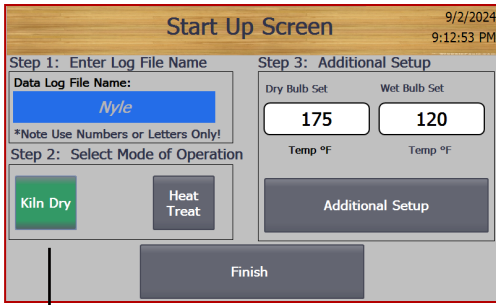
<b>⚠️ WARNING</b>	
<b>Electrical Shock!</b>	
<ul style="list-style-type: none"><li>• <b>Turn off power to unit before service.</b></li><li>• Make sure wires are labeled before disconnecting.</li><li>• Test unit after reconnecting wires.</li><li>• Failure to do the above could result in death or injury.</li></ul>	

<b>⚠️ WARNING</b>	
<b>Explosion Hazard!</b>	
<ul style="list-style-type: none"><li>• <b>DO NOT</b> purge or pressurize this system with oxygen to test for leakage. Using oxygen may cause explosive reaction.</li></ul>	

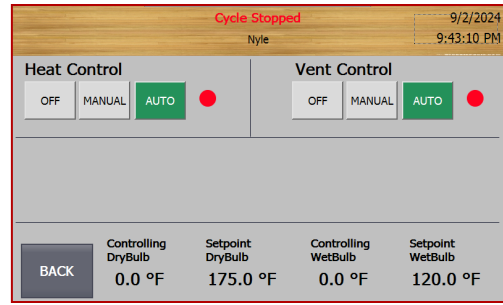


# Screen Outlines

## Kiln Dry Screens

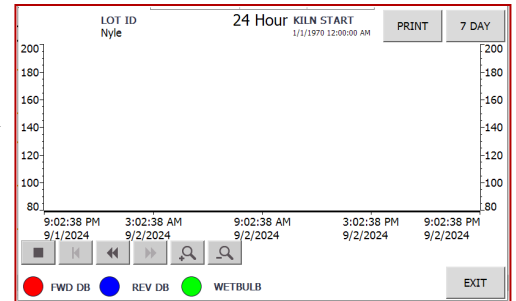
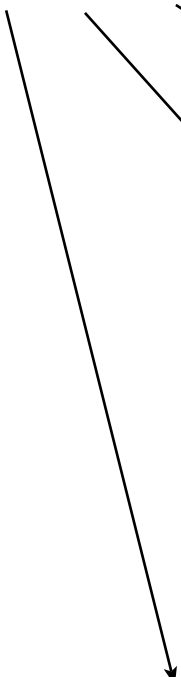
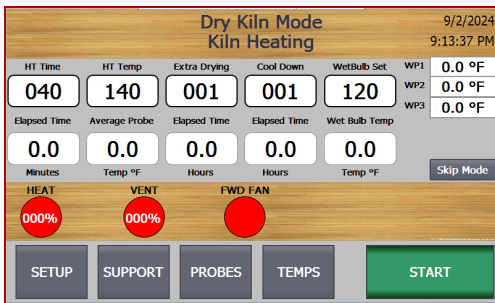


Kiln Dry Start up Screen

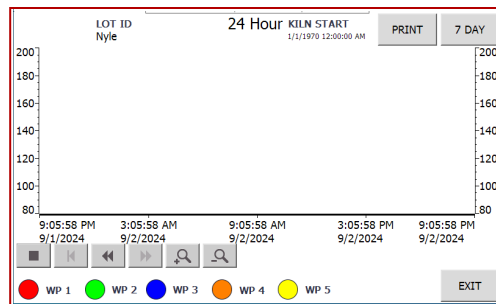


Kiln Dry Additional Setup Screen

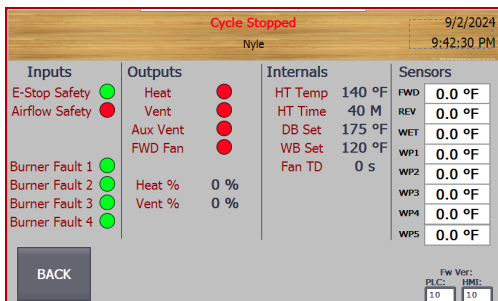
Kiln Dry Root Screen



Temp Screen

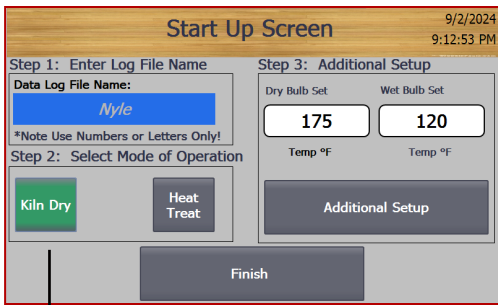


Probe Screen

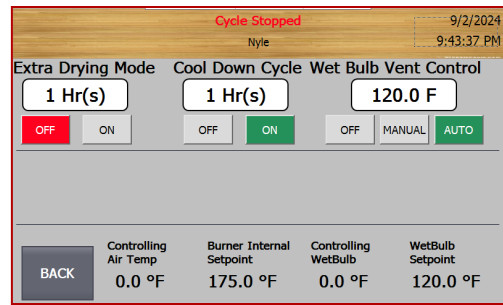


Support Screen

# Heat Treat Screens

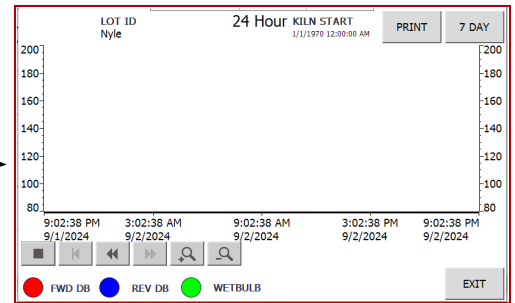
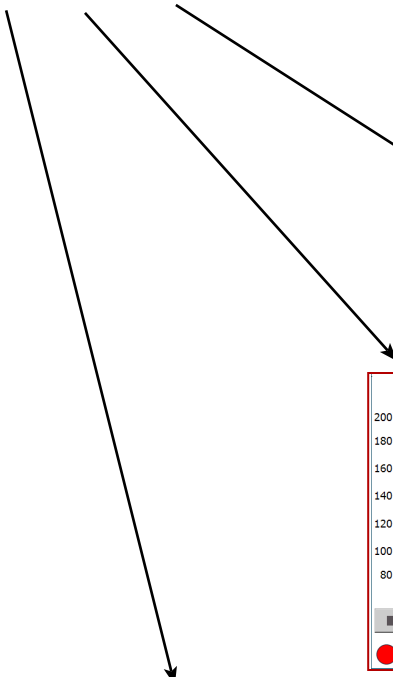
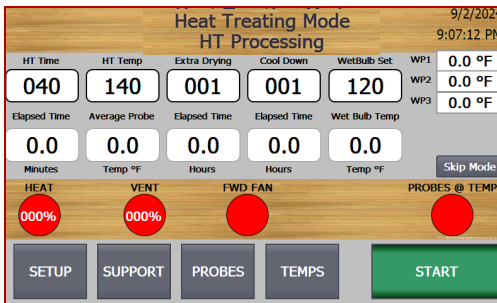


Heat Treat Start up Screen

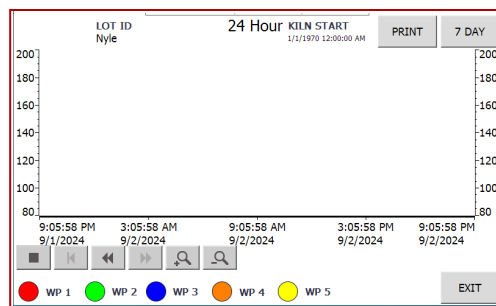


Heat Treat Additional Setup Screen

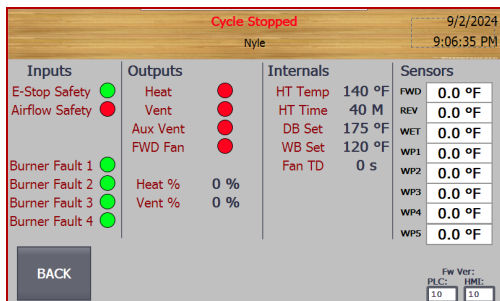
Heat Treat Root Screen



Temp Screen



Probe Screen



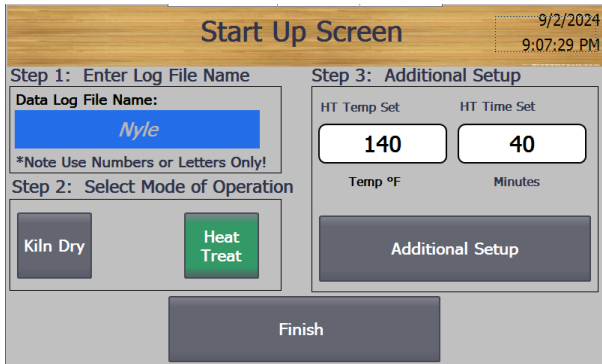
Support Screen



# General Control Information

## Getting Started

Your kiln control system includes screens for startup, configuration, and monitoring.

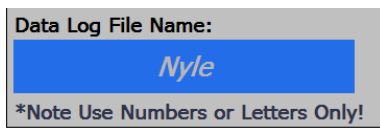


### Start up Screen

The Start up Screen is the default screen displayed when the kiln is powered on. This screen is used prior to starting the kiln for initial configuration. Nyle Presets the default setting for the purchased application. Check with local and state agencies to verify the default settings meet or exceed the requirement for heat treating in your area.

Follow the steps below to get your kiln started.

#### 1. Enter Log File Name



The default log file name is: Nyle. This is provided to ensure logs are always captured during initial start up of the kiln. This should be set to a unique value for any kiln cycle run for certification and data archival purposes. When entering the name be sure to only use numbers and letters, other keyboards values will fault the log system.

#### 2. Select the Mode of Operation

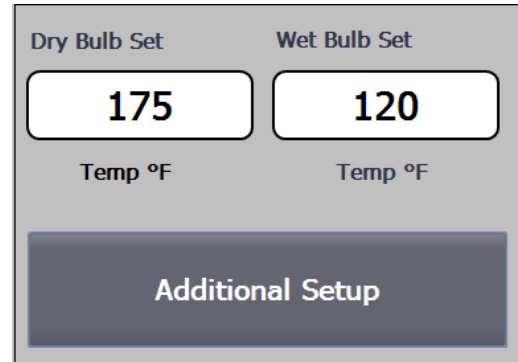


The button will turn green when selected. The input values on the right hand side will changes as well to match the selected mode.

**Kiln Dry Mode:** Configures the kiln to dry using only the Dry and Wet bulb set points.

**Heat Treat Mode:** Configured the kiln to heat treat using wood probe temperature and time once the probe set-point is reached.

#### 3. Additional Setup



Depending on the mode previously set, enter set-points to change the defaults as required. The Additional Setup button will provide additional configuration during kiln mode for heat, vents, and fan direction if equipped. When Heat Treat Mode is set it will allow the user to set extra drying time, cool down time to the cycle, as well as the wet bulb set for vent operation if required.

4. I. Press the finish button and you will move to the Home Status Screen of the selected mode.
- II. Verify the required settings for the cycle are set. If correct proceed, otherwise press the setup button to go back to the start up screen.
- III. Press the start button
5. Monitor to verify the cycle is treating or drying as intended using the Home Screen, Trends, and the Data Logs. If using Kiln Drying Mode the user will need to manually end the cycle as needed. Heat Treating Mode automatically advances to extra dry and cooling modes if enabled and ends the cycle once conditions are reached.



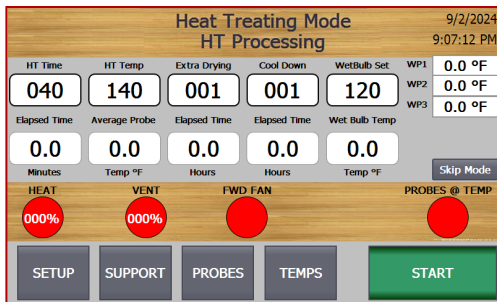
# General Control Information

## PLC Modules

The advanced control system uses a PLC controller with a built-in Ethernet switch, 24VDC power supply, and a RTD based temperature module. The HMI contains an SD data card and is used to store data logs for each cycle. The data logs are accessible via a LAN connection.

## Touch Screen Interface

The advanced control system uses a color touch screen as a main interface for operating the kiln chamber. The touch screen is capable of performing kiln operations including; data logs, reading trends, and monitoring status.



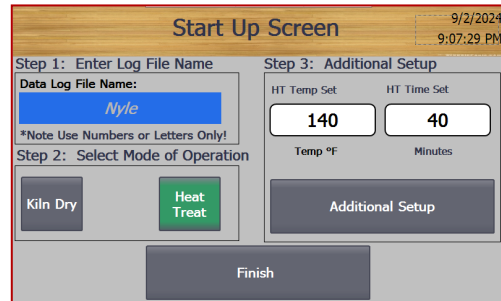
Main Screen

## Root Screen

The **Root** Screen is the home status screen for the mode you choose. From the Root Screen you can use the Root screen to access the Setup, Support, Probe, and Temperature screens. The Root screen displays current temperatures/conditions inside the kiln and cycle status. The Root screen is also the only screen capable of starting or stopping the kiln cycle.

## Start Up Screen

The **Start Up** Screen is used for the setup of the cycle. From the Start up screen you can select your drying mode, create the data log file, as well as set up the general parameters for the cycle.



Start Up Screen

## Web Server and Remote Access

The advanced control offers a VNC server control with full control capabilities enabled. Kiln operators can use the built in VNC server to monitor all kiln conditions on any kiln that is connected to the LAN. This VNC server can, with very little effort, be accessed via the web on cell phones, tablets and remote computers.

Off-site Access is achieved using site provided VPN. Each kiln is accessible via its IP address, which is typically assigned in the factory. For information on changing the default IP address, please call Nyle at (800) 777-6953

Example kiln IP addresses are:

For the PLC :

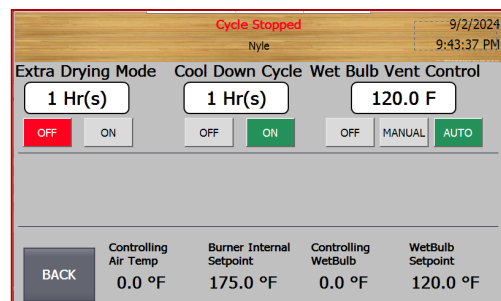
192.168.1.60

For the interface:

192.168.1.71

## Additional Setup Screen

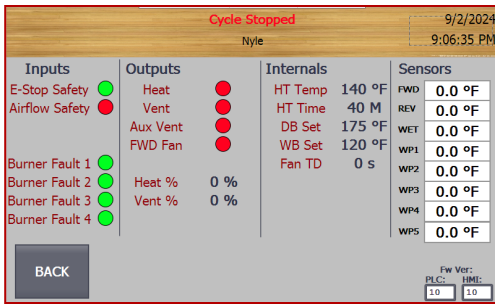
The **Additional Setup** Screen is where users go to setup their drying cycle. Through the Additional Setup Screen a kiln operator can control the Heat, Fan, and Vent controls. Extra Drying and Cool Down Cycle modes can be controlled from this screen if enabled. The controlling dry bulb, dry bulb set-point, controlling wet bulb and wet bulb set-point are also displayed on this page at the bottom. To go back to the home page, click the home button.



Additional Setup Screen

## Support Screen

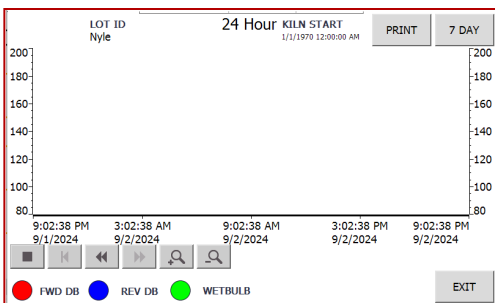
The **Support** screen is a helpful interface for viewing what is happening with your kiln. On this screen, displayed is each wood probes current temperature and the dry bulb and wet bulb temperature. To the left is the Emergency stop safety and Airflow safety which is displayed by either a red light meaning it is off or a green light meaning it is on. Next to those are heat call, vent call, and blower call. These are also displayed by either a red light meaning it is off or a green light meaning it is on.



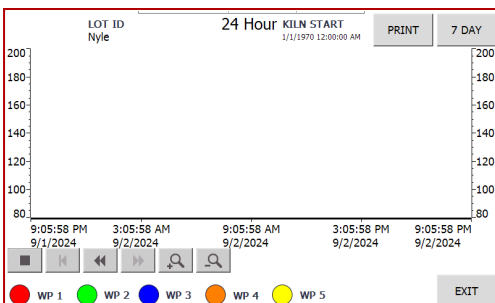
Support Screen

## Trend Screen

The **Trend** screens are the Probes and Temp Screens accessed through the Root screen. In these screens, the user can see real time data logging. This data logs the dry bulb, wet bulb, and each wood probe for 24 hours or 7 days. The user can print the data log by simply pressing the print button after the printer is configured to work with the HMI.



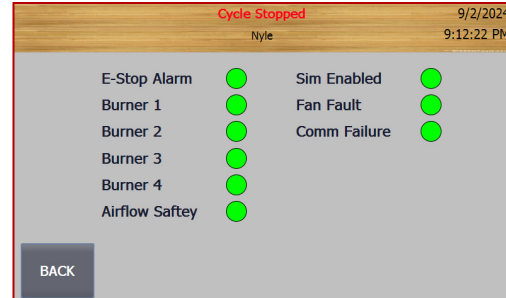
Temp Screen



Probe Screen

## Alarm Screen

When the kiln encounters a fault it will trigger an alarm. The **alarm** screen lists out all of the faults and their status. These are also displayed by either a red light meaning the fault had been triggered or a green light meaning it has not been triggered.



Alarm Screen

## Alarm Faults

Fan Fault	Fan Overloaded
	Contractor Signal
Blower Overload	Blower Overload
	Contractor Signal
Burner Fault 1	Burner Malfunction
	Check Heater Control 1
Burner Fault 2	Burner Malfunction
	Check Heater Control 2
Burner Fault 3	Burner Malfunction
	Check Heater Control 3
Burner Fault 4	Burner Malfunction
	Check Heater Control 4

## System Information

### USDA Requirements

*See Below for Typical USDA Requirements for Drying*

*\*\*State Requirements may differ\*\**

### Pallet Heat Treating

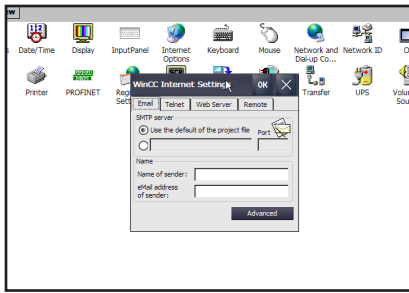
Internal Probe Temperature of 140°F for 40 Minutes

### Firewood Heat Treating

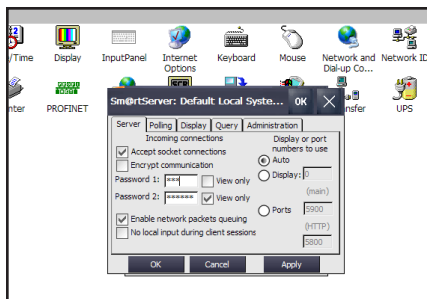
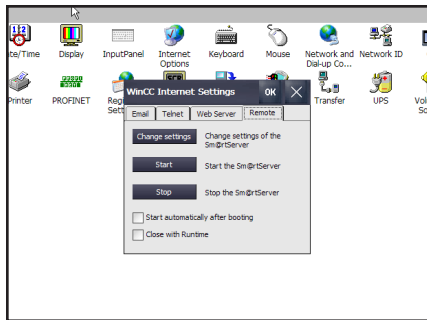
Internal Probe Temperature of 160°F for 75 Minutes







- When you are in the control menu, click on WinCC. Choose remote and change the settings.



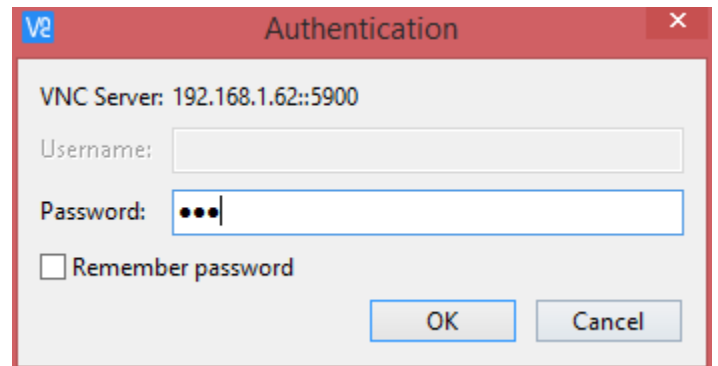
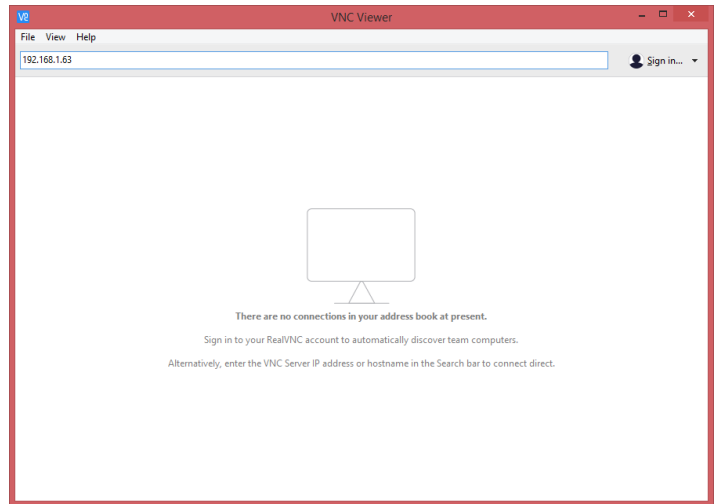
- Choose the password one box and set the password to 100. Apply and choose yes.
- Check the box that reads start automatically.
- Press the start button and press OK. You will now be able to remote access to this HMI

## Setting up Remote Access with VNC Viewer

To remote into the HMI screen from another device the user will need to install a program called VNC Viewer. The link for this program is posted below.

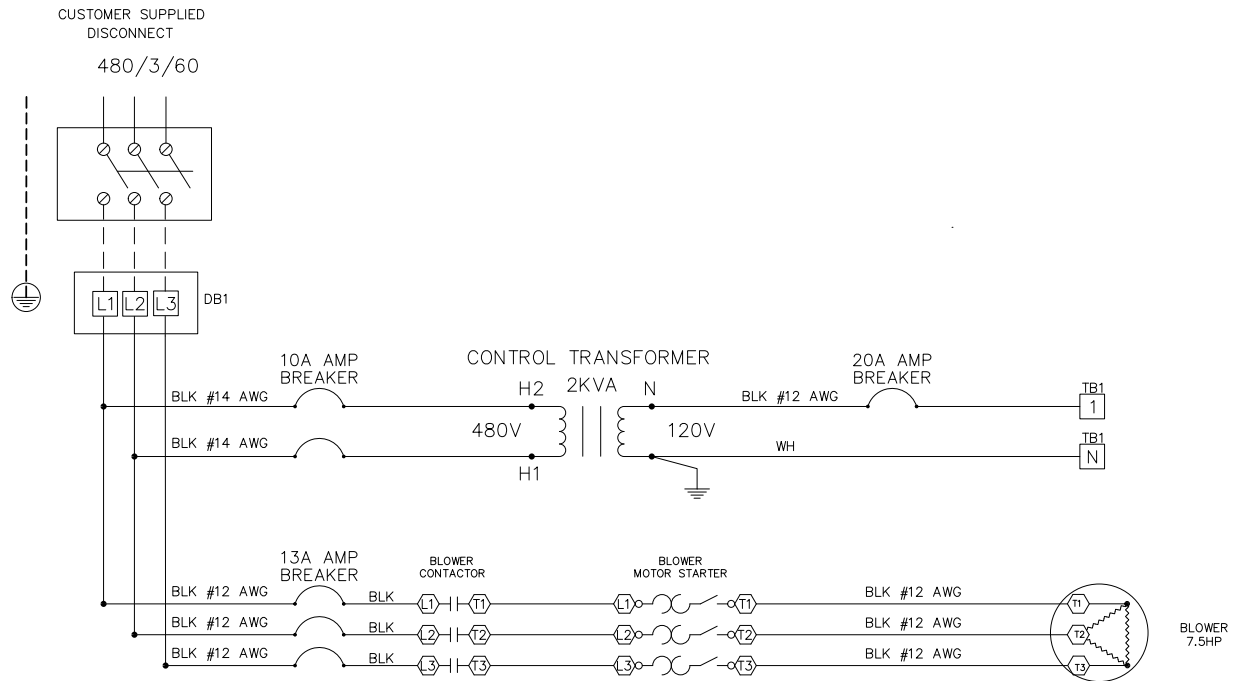
<https://www.realvnc.com/en/connect/download/viewer/>

After VNC Viewer is installed, the user will need to setup a connection to the HMI screen in the search bar at the top of the window in VNC Viewer. The search bar will read Enter a VNC Search Address or search. This is where the user will enter the IP address and press enter.




Type in 100 and then press OK or enter. This will bring up the same screen that is displayed on the HMI screen and the user will be able to monitor or change values as the user would be able to on the HMI screen.

# Power Wiring

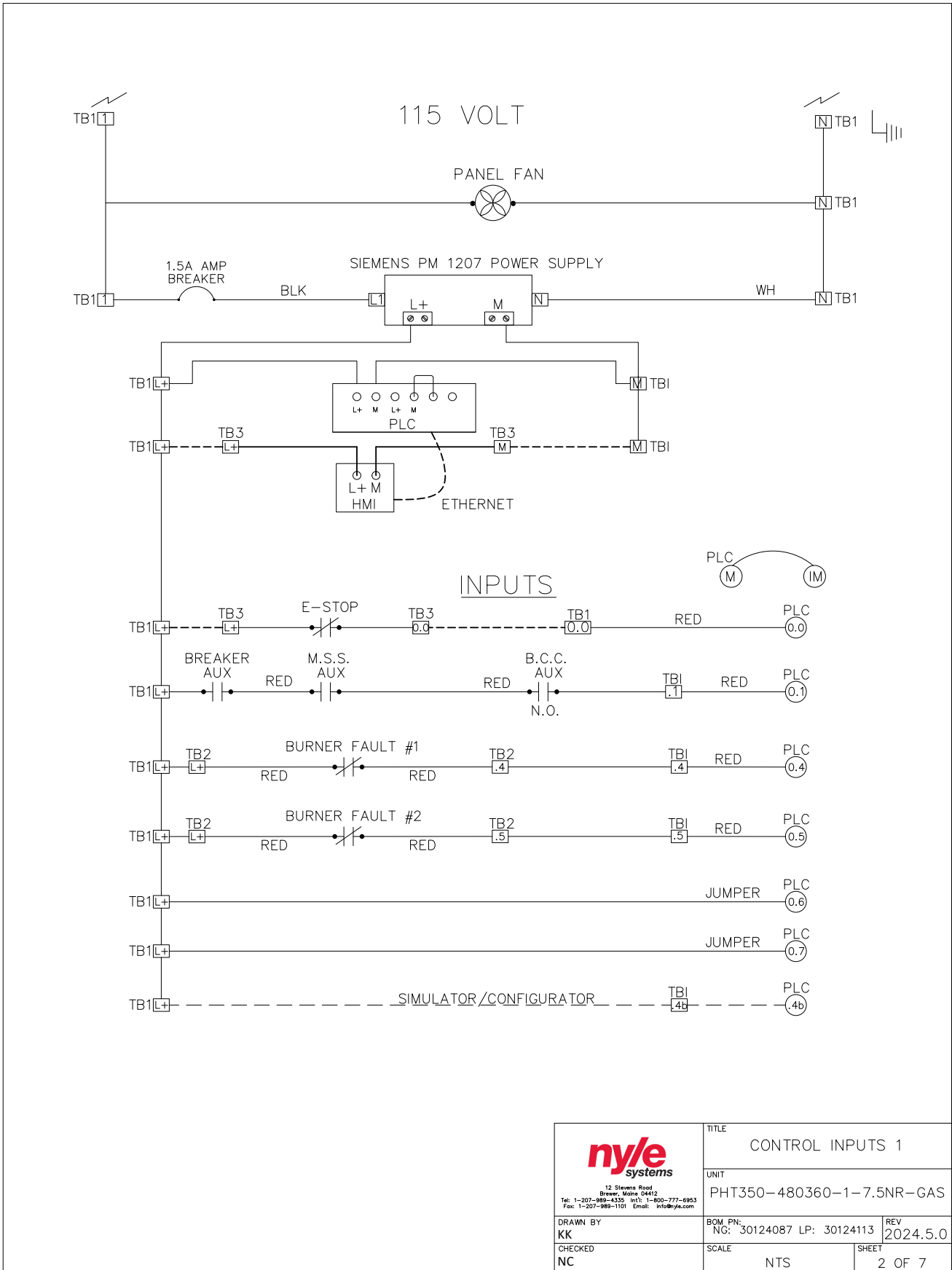



**LEGEND:**

- - - - FIELD WIRING
- TBI- TERMINAL BLOCK #1
- LPS- LOW PRESSURE SWITCH
- HPS- HIGH PRESSURE SWITCH
- OPS- OIL PRESSURE SWITCH
- MS- MOTOR STARTER
- C.C HTR- CRANKCASE HEATER
- BCC- BLOWER CONTACTOR COIL
- LLSV- LIQUID LINE SOLENOID VALVE
- CCC- COMPRESSOR CONTACTOR COIL
- C. AUX. C- COMPRESSOR AUX CONTACTS
- COL- COMPRESSOR OVERLOAD
- VM- VENT MOTOR
- SSC- SPRAY SYSTEM COIL
- HCC- HEAT CONTACTOR COIL
- FFCC- FAN FORWARD CONTACTOR COIL
- FRCC- FAN REVERSING CONTACTOR COIL
- CUC- COMPRESSOR UNLOADER COIL
- VCC- VENT CONTACTOR COIL
- SLRC - STATUS LIGHT RELAY COIL

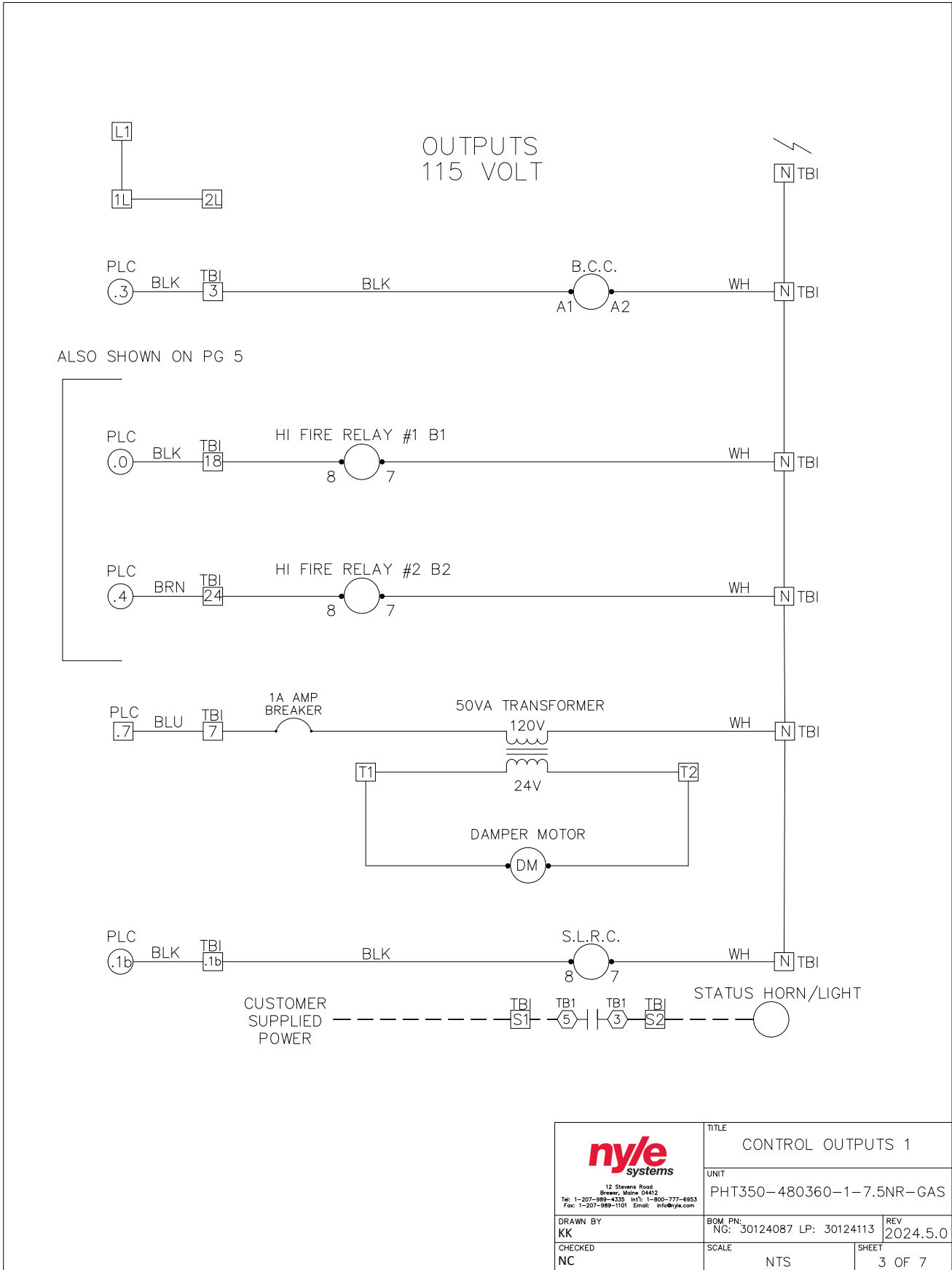
 <small>12 Stevens Road Brewer, Maine 04412 Tel: 1-207-989-4335 Int'l: 1-800-777-6953 Fax: 1-207-989-1101 Email: info@nyle.com</small>	TITLE POWER WIRING 1-1	
	UNIT PHT350-480360-1-7.5NR-GAS	
DRAWN BY KK	BOM PN: NG: 30124087 LP: 30124113	REV 2024.5.0
CHECKED NC	SCALE NTS	SHEET 1 OF 7


# Input Wiring



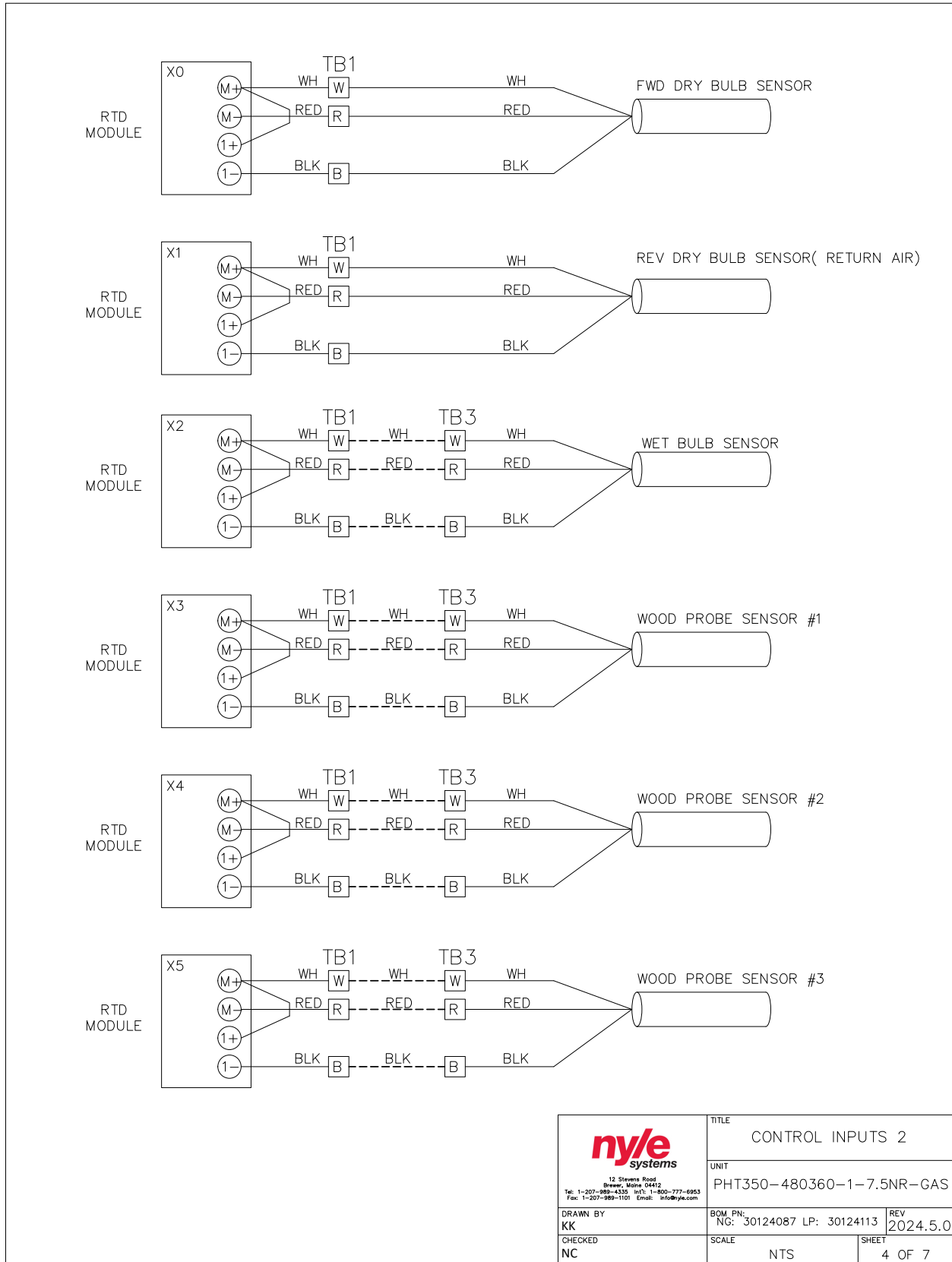
 <small>12 Stevens Road Brewer, Maine 04412 Tel: 1-207-989-4335 Int'l: 1-800-777-6953 Fax: 1-207-989-1101 Email: info@nyle.com</small>	TITLE CONTROL INPUTS 1	
	UNIT PHT350-480360-1-7.5NR-GAS	
DRAWN BY KK	BOM PN: NG: 30124087 LP: 30124113	REV 2024.5.0
CHECKED NC	SCALE NTS	SHEET 2 OF 7

# Output Wiring



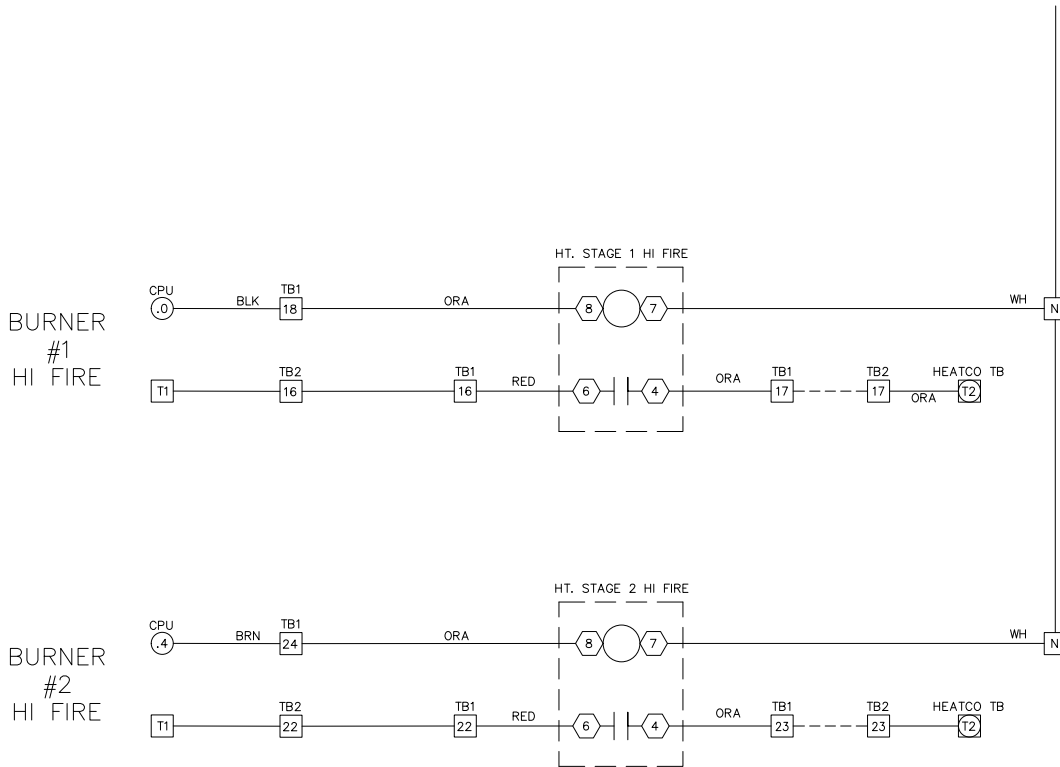
 <small>12 Stevens Road Brewer, Maine 04412 Tel: 1-207-989-4335 In/VT: 1-800-777-6953 Fax: 1-207-989-1101 Email: info@nyle.com</small>	TITLE CONTROL OUTPUTS 1	
	UNIT PHT350-480360-1-7.5NR-GAS	
DRAWN BY KK	BOM PN: NG: 30124087 LP: 30124113	REV 2024.5.0
CHECKED NC	SCALE NTS	SHEET 3 OF 7


# RTD Wiring



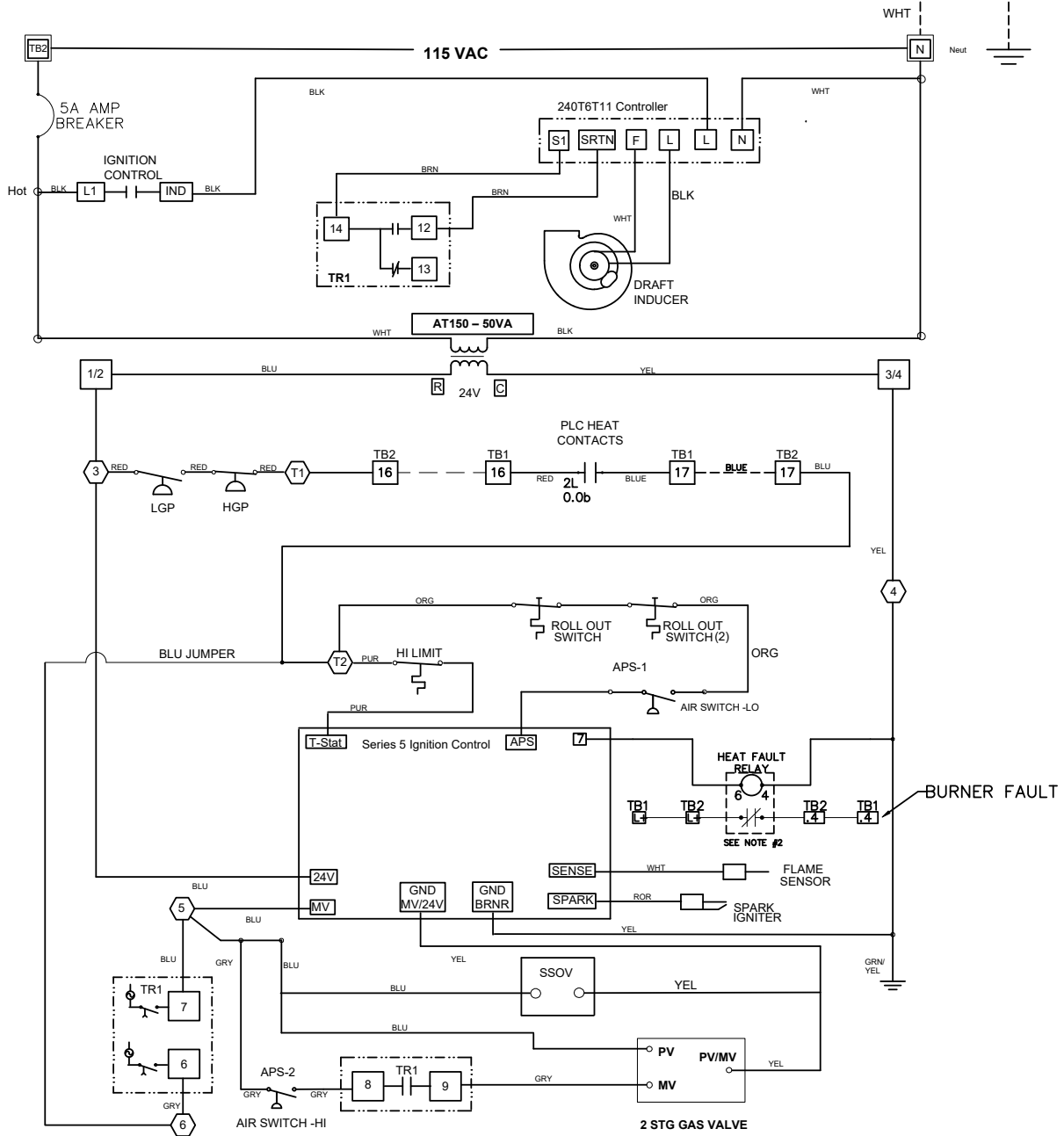


# Burner Wiring



 <small>12 Stevens Road Brewer, Maine 04412 Tel: 1-207-989-4355 Int'l: 1-800-777-6953 Fax: 1-207-989-1101 Email: info@nye.com</small>	TITLE CONTROL OUTPUTS 2	
	UNIT PHT350-480360-1-7.5NR-GAS	
DRAWN BY KK	BOM PN: NG: 30124087 LP: 30124113	REV 2024.5.0
CHECKED NC	SCALE NTS	SHEET 5 OF 7

BURNER #1



--- CUSTOMER PROVIDED COMPONENT

--- CUSTOMER / FIELD WIRING

□ INTERNAL TERMINAL CONNECTION

□ TIMER RELAY - TR1-090LH15

③ EXTERNAL TERMINAL CONNECTION

1/2 TR1 TERMINAL CONNECTION

(2) 2nd ROLLOUT SWITCH ON HORIZONTAL BURNER TRAY ONLY

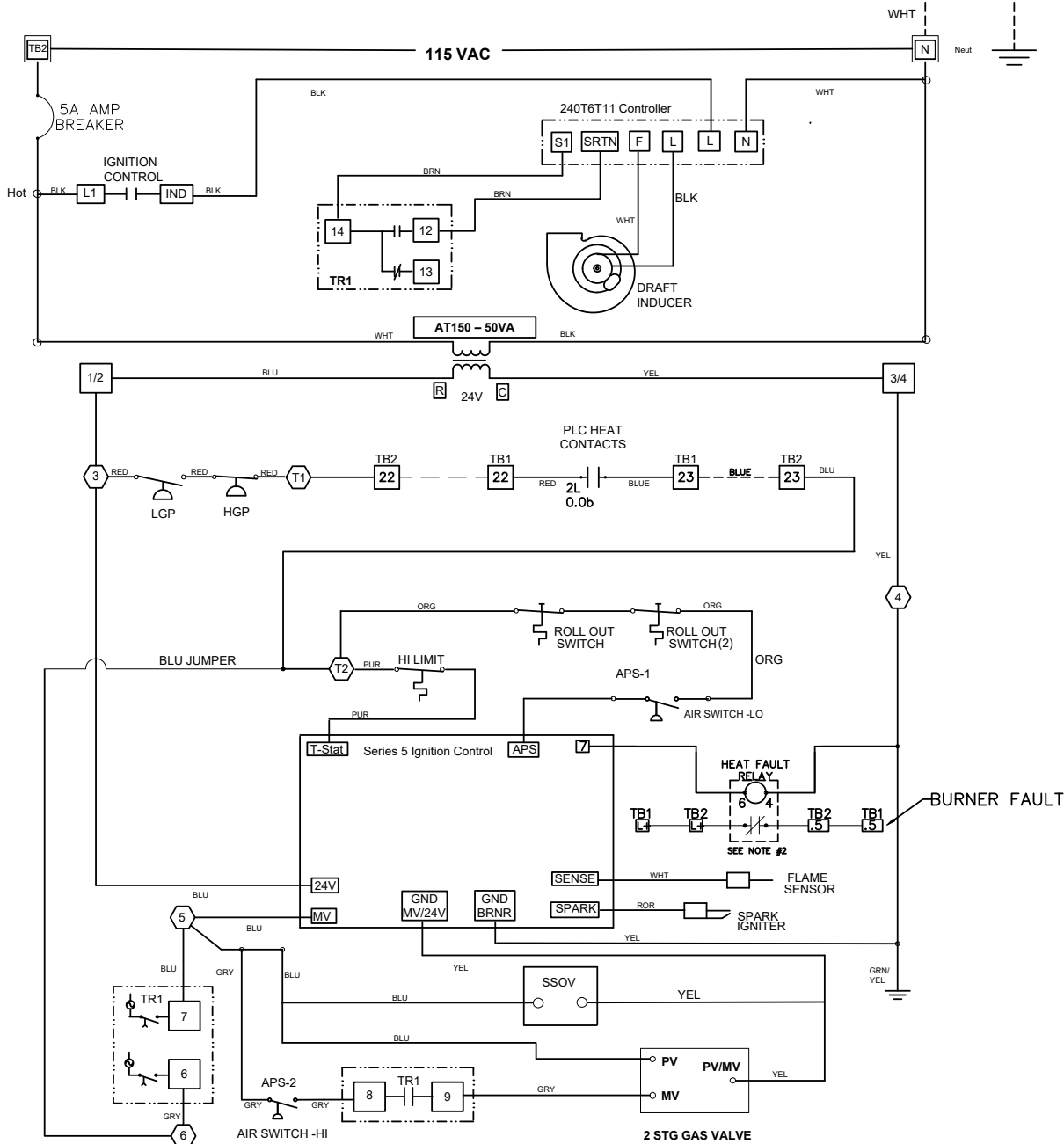
Capable Controls - 5 Series Ignition Control

**Note:** If Customer safety interlocks provided, wire in series with heat enable

Models: HDA/HDB400  
HMA/HMB400

 <small>12 Stevens Road Brewer, Maine 04412 Tel: 1-207-989-4335 Int'l: 1-800-777-6953 Fax: 1-207-989-1101 Email: info@nyle.com</small>	TITLE BURNER WIRING	
	UNIT PHT350-480360-1-7.5NR-GAS	
DRAWN BY KK	BOM. PN: NG: 30124087 LP: 30124113	REV 2024.5.0
CHECKED NC	SCALE NTS	SHEET 6 OF 7

BURNER #2



CUSTOMER PROVIDED COMPONENT

CUSTOMER / FIELD WIRING

INTERNAL TERMINAL CONNECTION

TIMER RELAY - TR1-090LH15

EXTERNAL TERMINAL CONNECTION

TR1 TERMINAL CONNECTION

(2) 2nd ROLL OUT SWITCH ON HORIZONTAL BURNER TRAY ONLY







Capable Controls - 5 Series Ignition Control  
**Note:** If Customer safety interlocks provided, wire in series with heat enable

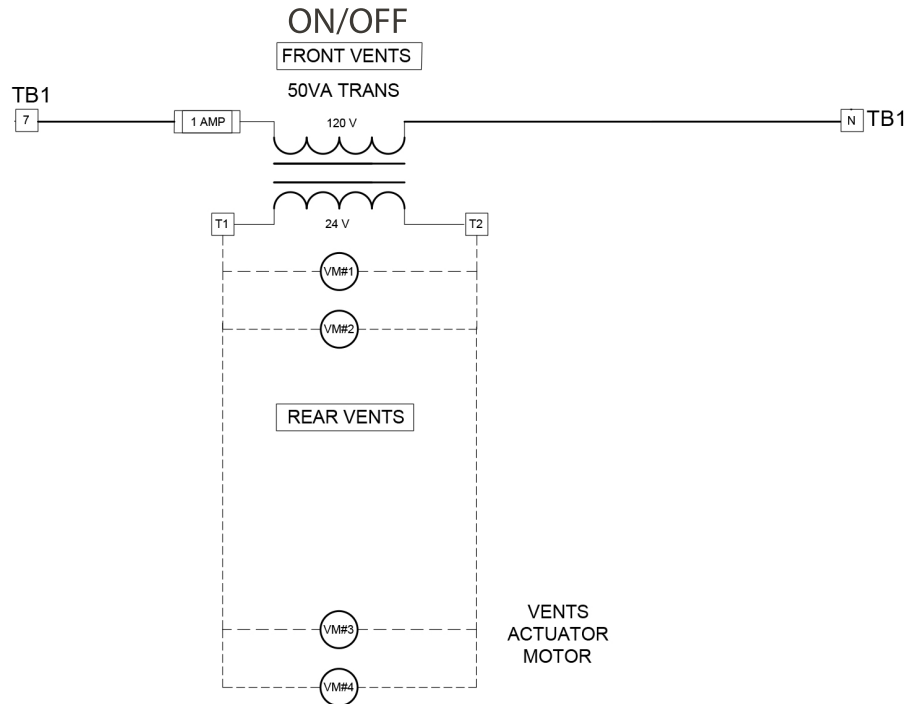
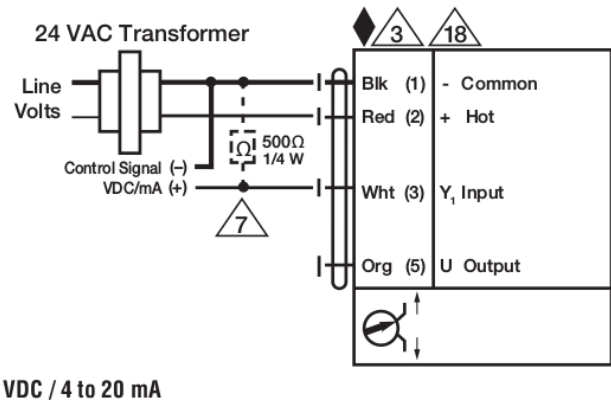
Models: HDA/HDB400  
 HMA/HMB400

 <small>12 Stevens Road                  Brewer, Maine 04412                  Tel: 1-207-989-6335                  Fax: 1-207-989-1101                  Email: info@nye.com</small>	TITLE BURNER WIRING	
	UNIT PHT350-480360-1-7.5NR-GAS	
DRAWN BY KK	BOM PN: NG: 30124087 LP: 30124113	REV 2024.5.0
CHECKED NC	SCALE NTS	SHEET 7 OF 7

# Typical Vent Circuits

## INSTALLATION NOTES

-  2 Actuators may be connected in parallel. Power consumption and input impedance must be observed.
-  3 Actuators may also be powered by 24 VDC.
-  7 A 500 Ω resistor (ZG-R01) converts the 4 to 20 mA control signal to 2 to 10 VDC.
-  8 Control signal may be pulsed from either the Hot (Source) or Common (Sink) 24 VAC line.
-  9 For triac sink the common connection from the actuator must be connected to the hot connection of the controller. Contact closures A & B also can be triacs. A & B should both be closed for the triac source and open for triac sink.
-  18 Actuators with plenum cable do not have numbers; use color codes instead.



### LEGEND

F.F.C.C. - FANS FORWARD CONTACT COIL  
F.R.C.C. - FANS REVERSE CONTACT COIL

12 Stevens Road Brewer, Maine 04412 Tel: 1-207-989-4330 Int: 1-800-777-6953 Fax: 1-207-989-1101 Email: info@nyte.com		TITLE	
DRAWN BY NR		PART NUMBER	
CHECKED	SCALE	DWG FILE NAME	REV 1.2
		NTS	SHEET







**nyle**  
*Dry Kilns*