

# PFT 800

*Pallet & Firewood Heat Treater*

**nyle**  
Dry Kilns



*Starting at*  
**\$79,995.00**



## KEY FEATURES

- ✓ ***Complete Turn-Key System***  
Housed in a 40-foot refrigerated shipping container, the system includes everything needed for immediate heat-treating operations.
- ✓ ***Safe, Indirect Gas-Fired Furnace***  
Indirect gas-fired design prevents direct flame contact, offering safer heat-treating compared to direct-fired systems while maintaining efficiency.
- ✓ ***Advanced Control System***  
Equipped with precise controls with data logging, the system ensures compliance with evolving regulations & supports growing operational needs.
- ✓ ***Durable Construction***  
Manufactured with high-quality materials to reduce maintenance and repair time, allowing you to focus on maximizing productivity.

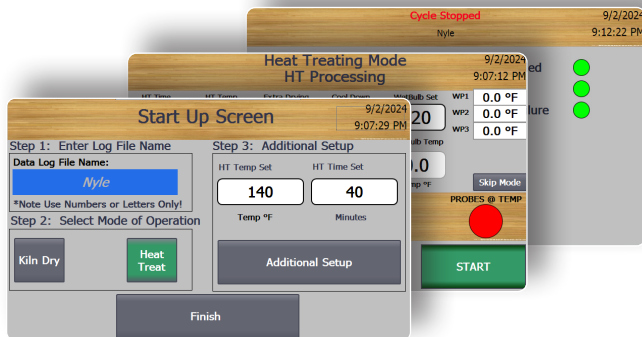
## About The PFT 800

Nyle's PFT 800 Heat-Treating System is designed for flexibility, efficiency, and ease of use, making it suitable for treating everything from pallets to firewood. Built within a durable 40-foot refrigerated shipping container, these systems provide all the equipment necessary for heat-treating operations. With indirect gas-fired furnaces running on natural gas or propane, Nyle's heat treaters are both efficient and safe, requiring no boiler.

# TECHNICAL DATA SPECIFICATION

Load Capacity	350 Pallets/ 6-8 Cords
Max Temperature	180° F
Drying Time	Winter Drying: 3 -5 Days / Heat Treating: 3 -6 Hours
	Summer Drying: 2-3 Days / Heat Treating: 2-4 Hours
Energy Output	800,000 Btu/hr
Number of Fans	One 36", 7.5 HP
Number of Vents	Two Duct Vents
Dimensions	40' L x 8' W x 9' 6" H
Shipping Weight	11,000 lbs
Power Requirements	480V Three Phase, 60 Hz

## Controls



Our Heat-Treating control system provides the tools to ensure proper and efficient heat treatment every cycle.

The control system allows complete control over the set points and climate during the cycle, even automatically turning off the equipment when heat treating has been completed.

Automatic recording allows users to generate printable reports for certification & shipping requirements.

## Contact Us

Phone: (800) 777-6953  
Email: kilnsales@nyle.com  
web: www.nyledrykilns.com

